

TWYNAM & BARNETT ANGUS SALE

Roma Saleyards, Qld



BarnettAngus

Thursday 07 SEP 2023 at 11.00am





Above L-R:

MARK BARNETT

Barnett Angus

ROGER STANTON

Twynam Agriculture

KEITH HAY

GeneFlow Angus

HARVEY WEYMAN-JONES

Weyman-Jones & Co

TWYNAM

ANGUS & ANGUS COMPOSITE

BULL SALES 2023

NSW 23rd August Online

QLD Roma 7th September On Site

Proven performance throughout Southern & Northern Australia

- 31 years as a registered stud.
- cows are in CPC's Northern Territory embryo program.

Fertility

Marbling

Index

Feed Efficiency - longest testing of any Angus Stud



CONTACT ROGER STANTON

+61 497 553 218

MANAGERAG@TWYNAM.COM

NSW AGENT

DHUGALD MCDOWALL

DMCDOWALL1@BIGPOND.COM

+61 428 592 692



QLD AGENT

HARVEY WEYMAN-JONES

HARVEY@WJCO.COM.AU

+61 414 941 788

WWW.TWYNAM.COM/AGRICULTURE

TWYNAM & BARNETT ANGUS SALE

Roma Saleyards, Qld

**Thursday
07 September 2023**



LIVE AUCTION 11am

Online on elitelivestockauctions.com.au



**Mark Duthie
0448 016 950**

◀ *Joint Agents* ▶



**Harvey Weyman-Jones
0414 941 788**

TWYNAM & BARNETT ANGUS SALE

Roma – 07 September 2023

CONDITIONS OF SALE

The sale will be conducted under the ALPA Conditions of Sale.

1. These bulls comprise of Registered Angus bulls, Commercial Unregistered Angus bulls and Composite bulls from an Angus base.
2. BREEDPLAN Data published in the sale catalogue is current at the time of printing.
3. BREEDING SOUNDNESS & GUARANTEES OF FERTILITY: All bulls offered for sale have passed a semen fertility test by a registered veterinary surgeon and a semen evaluation certificate will be available.

GUARANTEES OF FERTILITY

BULLS: All bulls are guaranteed breeders and to so prove within six months of the date of sale.

CLAIMS: Claims under the above guarantees of fertility must be made to the vendor within six months from the date of sale and prior to the animal entering a quarantine area other than on the vendor's property.

- Claims must be accompanied by a veterinary certificate which must clearly identify the basis of the claim.
- Infertility resulting from injury or disease occurring after the sale of the animal will not be covered by this guarantee.
- The vendor retains the right to have the animal placed on a property nominated by the vendor or returned to the vendor's property for further assessment of fertility for a period not exceeding six months. In the event of the animal being proven fertile within the period, the costs incurred shall be borne by the purchaser. In the event of the animal not being proven fertile within the period the costs incurred shall be borne by the vendor.

LIABILITY OF A VENDOR: Except for costs defined elsewhere in the conditions of sale, the liability of a vendor in respect to claims relating to fertility shall not exceed the purchase price of the animal(s) or provide mutually agreed upon replacement animals.

REFUNDS: In the event of a claim substantiated and the purchase price being refunded, the animal(s) shall automatically become the property of the vendor and be returned to the vendor or be disposed of according to vendor instructions at vendor's expense.

The guarantee is voided automatically if the animal is returned to the vendor in poor physical condition or with any injury as determined in the sole discretion of the vendor acting reasonably, or if tests carried out on behalf of the vendor within 14 days of return proved positive to any disease which may affect the animals fertility or ability to breed naturally, or the purchaser admits that it has or the vendor forms the view acting reasonably that the purchaser has collected and stored semen from a bull or has performed super ovulation or flushed a female.

In the event of a dispute as to whether a Lot is a breeder, such dispute shall be resolved by the vendor and the purchaser and the auctioneer. While the auctioneer will use their best endeavours to assist, shall have no liability or responsibility in that regards. In the event that a Lot is alleged or proved to be a breeder the purchaser shall nevertheless be obliged to pay the auctioneer the full price and any other monies or interest payable by the purchaser in accordance with these terms and conditions.

4. **PRE-SALE INSPECTIONS:** All Lots will be available for inspection on the afternoon prior and on sale day at the sale venue.
5. **BIDDING:** The sale will be a live auction with an online interface through Elite Livestock Auctions allowing appropriately registered potential buyers to bid. Potential online buyers should register with elitelivestockauctions.com.au.
6. **INSURANCE:** Ownership of a Lot changes to the Buyer at the fall of the hammer. Insurance is recommended and will be available at the sale.
7. **TRANSFERS:** The Agents transfer the ownership of live Lots to the new owners at no cost to the Buyer.
8. **FREIGHT & DELIVERY AFTER SALE:** Freight is the Buyers' responsibility to arrange and pay for. The Agents will liaise with carriers and buyers.
9. **GST:** The sale will be conducted on a GST exclusive basis and GST of 10% will be added to the sale price on the invoice.
10. **RISK & LIABILITY RELEASE:**
 - Any person visiting Roma Saleyards does so at his/her own risk.
 - All visitors release the vendors and agents from all actions or demands due to any loss, death, damage or injury occurring on the premises.
 - The vendors or agents are not responsible and have no liability for any death or injury to any person or any loss of or damage to visitors, their property or otherwise.
11. **HOW TO BID:** Registered bidders can bid live at the auction or online through elitelivestockauctions.com.au or by telephone via a nominated Agent/third party approved by the Agents.
12. **BIDDING VARIATIONS (PER LOT):** Lots will be offered for sale on a per head basis.
13. **REBATES TO OUTSIDE AGENTS:** A rebate of 5% of the purchase price will be allowed to outside agents, who attend the sale, introducing buyers in writing at least 24 hours prior to the sale and settling on their behalf within 7 days from date of sale. 2% rebate will be paid to those agents not in attendance or bidding online.

EBV PERCENTILE TABLE

PERCENTILE AVERAGE	Calving Ease Direct	Calving Ease Dtrs	Gestation Length	Birth Weight	200 Day Growth	400 Day Growth	600 Day Growth	Mature Cow Weight	Milk	Scrotal Size	Days to Calving	Carcass Weight	Eye Muscle Area	Rib Fat	Rump Fat	Retail Beef Yield	IMF	NFI-F	Docility	Claw Set	Foot Angle	Leg Angle	Angus Breeding Index	Domestic Index	Heavy Grain Index	Heavy Grass Index	Angus Breeding Low Feed Cost Index	Domestic Low Feed Cost Index	Heavy Grain Low Feed Cost Index	Heavy Grass Low Feed Cost Index	AngusPRO Index	Angus Terminal Sire Index
1	11	10	-10.7	-0.4	70	123	162	160	28	4.8	-8	99	14.6	4.2	5.1	2	5.9	-0.54	43	0.42	0.6	0.74	273	230	364	261	450	392	540	513	228	236
5	9.1	8.3	-8.8	1	64	112	148	140	25	3.9	-7.1	88	11.9	2.9	3.4	1.5	4.6	-0.32	36	0.54	0.7	0.84	253	211	335	239	419	364	504	476	205	221
10	8	7.3	-7.9	1.7	60	107	140	131	23	3.5	-6.5	83	10.6	2.2	2.5	1.3	4	-0.2	32	0.62	0.76	0.88	242	201	320	227	404	350	484	456	193	213
15	7.1	6.5	-7.2	2.2	58	104	136	124	22	3.2	-6.2	79	9.7	1.7	1.9	1.1	3.6	-0.13	29	0.66	0.8	0.9	234	195	309	219	393	341	471	443	185	207
20	6.4	5.9	-6.8	2.6	57	101	132	119	21	3	-5.9	77	9	1.4	1.5	1	3.3	-0.07	27	0.68	0.84	0.94	228	189	301	213	384	333	460	433	178	203
25	5.7	5.4	-6.4	2.9	55	99	129	115	20	2.8	-5.6	75	8.4	1.1	1.1	0.9	3.1	-0.02	25	0.72	0.86	0.94	223	185	293	207	377	326	451	424	173	199
30	5.1	4.9	-6	3.1	54	97	126	112	19	2.6	-5.4	73	7.8	0.8	0.8	0.8	2.9	0.03	24	0.74	0.88	0.96	218	180	287	202	370	320	443	416	167	196
35	4.6	4.4	-5.7	3.4	53	95	124	108	19	2.5	-5.2	71	7.4	0.6	0.5	0.7	2.7	0.07	23	0.76	0.9	0.98	213	177	281	197	364	314	434	408	162	192
40	4	3.9	-5.4	3.6	52	93	121	105	18	2.3	-5.1	69	7	0.4	0.2	0.6	2.5	0.11	22	0.8	0.92	1	209	173	275	193	357	309	427	401	158	189
45	3.4	3.5	-5.1	3.8	51	92	119	102	18	2.2	-4.9	68	6.6	0.2	0	0.6	2.3	0.14	20	0.82	0.94	1.02	205	169	269	188	351	303	419	393	153	186
50	2.9	3	-4.8	4	50	90	117	100	17	2.1	-4.7	66	6.2	-0.1	-0.3	0.5	2.1	0.18	19	0.84	0.96	1.02	200	166	263	184	345	298	411	386	148	183
55	2.3	2.5	-4.5	4.3	49	89	115	97	16	2	-4.5	64	5.8	-0.3	-0.6	0.4	1.9	0.22	19	0.86	0.98	1.04	196	162	257	179	339	292	404	379	144	180
60	1.6	2	-4.2	4.5	48	87	112	94	16	1.8	-4.4	63	5.4	-0.5	-0.8	0.3	1.8	0.26	18	0.88	1	1.06	191	158	250	174	332	287	396	371	139	176
65	1	1.5	-3.8	4.7	47	85	110	91	15	1.7	-4.2	61	5	-0.7	-1.1	0.3	1.6	0.29	17	0.92	1.02	1.08	186	154	244	170	325	280	387	363	134	173
70	0.2	0.9	-3.5	4.9	46	83	107	88	15	1.6	-4	59	4.6	-0.9	-1.4	0.2	1.4	0.34	16	0.94	1.04	1.08	181	149	237	164	317	273	377	354	128	169
75	-0.6	0.3	-3.2	5.2	44	81	105	84	14	1.4	-3.8	57	4.2	-1.2	-1.7	0.1	1.2	0.38	15	0.96	1.08	1.1	175	144	229	158	308	266	366	344	121	165
80	-1.6	-0.4	-2.7	5.5	43	79	101	80	13	1.3	-3.5	55	3.7	-1.4	-2.1	0	1	0.44	14	1	1.1	1.12	168	138	219	151	298	257	354	332	114	160
85	-2.7	-1.4	-2.3	5.9	41	76	98	76	12	1.1	-3.2	53	3.1	-1.7	-2.5	-0.2	0.8	0.5	12	1.04	1.14	1.16	159	131	208	142	285	246	338	318	105	154
90	-4.3	-2.5	-1.6	6.3	39	73	93	69	11	0.8	-2.8	49	2.3	-2.2	-3.1	-0.3	0.5	0.58	10	1.08	1.18	1.18	147	122	193	131	268	231	317	298	93	146
95	-7	-4.5	-0.7	7	36	68	85	60	9	0.4	-2.1	44	1.2	-2.8	-3.9	-0.6	0	0.71	7	1.16	1.26	1.24	129	106	171	113	239	207	284	265	74	133
99	-12.7	-8.5	1.4	8.5	28	56	70	41	6	-0.4	-0.3	34	-1.2	-4.2	-5.6	-1.1	-0.8	0.96	0	1.3	1.39	1.34	95	77	129	81	187	161	223	202	38	110

AUGUST 2023 BREED AVERAGE

AV	2.2	2.6	-4.8	4	50	90	117	100	17	-4.7	2.1	20	0.19	66	6.3	0	-0.3	0.5	2.2	0.84	0.97	1.03	197	163	259	181	340	294	405	381	145	181
----	-----	-----	------	---	----	----	-----	-----	----	------	-----	----	------	----	-----	---	------	-----	-----	------	------	------	-----	-----	-----	-----	-----	-----	-----	-----	-----	-----

BARNETT ANGUS

Barnett Angus is an intensive technology driven Angus herd in Tasmania, 25 minutes west of Launceston run over two properties at Westbury and Meander.

Barnett Angus grew out of a desire to produce the highest quality carcase production genetics. Cow matings are primarily performed via IVF, embryo transfer or artificial insemination.

Our Foundation.

Starting with 3 donor cows from Strathewen and subsequent donor acquisitions from Ayrvale, Stoney Point, Reiland and Circle 8 have become core of our high indexing females selected for fertility, exceptional growth rate and superior carcase values.

The star donors have bubbled to the top and are now resulting in 150 plus calves each year.

An intensive ET and IVF program enables Barnett Angus to have a unique offering of superior carcase maker genetics.

Our Philosophy.

Good soil and good cattle need a dedicated focus and careful management to progress and sustain an enterprise that satisfies the spirit.

We use regenerative practices to continuously improve the soil and enhance the environment for our cattle to thrive.

Great cattle are not an accident. They come with generations of proven maternal excellence and a clear picture

of what best works in a natural dry land environment. An environment that experiences tough times and good times which is the story of Australia.

We are very conscience that the value of the product that leaves the farm is underpinned by an enhanced customer experience that emanates from high marbling grass feed animal with the providence of being raise naturally and ethically.

The People.

Mark and John have joined forces as a father / son team that run Barnett Angus.

Mark's return to stud cattle breeding after 25 years away while being engaged in various technology enterprises and an agri-energy company.

Mark has 2 daughters and a son, all married, one living in England, one in Victoria and John is near Launceston. The next gen is increasing in number with two granddaughters, a grandson and another little boy one on the way.

This Offering.

Its an opportunity to enhance your herd with some very elite genetics.

We know building an elite herd can take a lifetime and the power behind the bull offering is always underpinned by the depth of maternal strength in the pedigree. It absolutely underpins the profitability of any breeding program.

These unique donors are balanced, stout, growthy and trouble-free females with a heritage of superior maternal genetics. They are super feminine phenotypes that come with high carcase values and superior growth while retaining safe calving ease.

The donors excel in the areas that return the dollars. They are highly fertile, long sided, angular feminine cows with data to dream about.

That's what's behind this bull offering. They are vet checked big, stout, strong, sound bulls. They have resided in Queensland for the past three months and are ready for work.

They are represented by a powerful group of reference sires, including:

- **Rennyleas P559**, very balanced data set with top 1%-foot structure
- **Lawsons Momentous M518**, docility, fertility and awesome EMA & IMF
- **Roseda Powerball23**, a light bw, growth powerhouse with super Cwt and IMF
- **Baldrige Beast Mode son**, calving ease, growth, docility and great feet
- **Murdeduke Quarterback Q011**, a proven high fertility allrounder with a superior dataset
- **Musgrave 316 Exclusive**, a proven sire for easy calving, super phenotype
- **Esslemont Quokka Q24**, calving ease, milk, fertility, and carcase values to die for.

*All the Best
Mark & John Barnett*

MARK BARNETT | 0409 023140

OUR GUARANTEE

We guarantee that all breeding cattle sold by Barnett Angus, both bulls and females, are fertile to the best of our knowledge. If a bull is injured at any time in the 12 months following the sale so as to make them functionally infertile, we will provide you with a satisfactory replacement, if available, or issue you a credit equal to the bull's purchase price minus the salvage value received for that bull.

Nutrition & Health

All bulls having been vaccinated with Pestigard, Vibrovax and Ultrava 7-in-1

TWYNAM AGRICULTURE

“MORE QUALITY BEEF, LESS FEED”

At Twynam we have been in the business of producing Angus genetics, that work for the commercial cattle breeders for 31 years.

Today our focus is on feed efficiency, marbling, structure and producing calves. And, last but not least, we expect all our animals to be well mannered.

Our stud today comes from the background of the stud 2,000 cows that produced bulls for our 20,000 commercial cows. We know what economics mean and what drives profit.

Today we don't run a commercial herd, so all our bulls end up in the market.

FEED EFFICIENCY

Over the last 6 years we have embarked on testing nearly all our male and female progeny. No other Angus stud has been testing for as long as us and NO stud has been testing most of their female progeny as well as the males. This also makes us very unique in the whole world. Progress is evident and we are identifying animals that are genetically proven to be superior.

In this Roma sale you will find a large number of the bulls with the unusual mix of high marbling and negative NFI (more feed efficient)

ADAPTABLE

Although we have been a NSW based stud, our cattle are well proven in the north with some of our cows being



Colt Kahlbetzer, Johnny Kahlbetzer and Roger Stanton

found in the Consolidated Pastoral Company's stud as donors in their ET program.

COMPOSITE

For many years Twynam had a large commercial Santa Gertrudis herd in central and northern NSW. Unfortunately, it wasn't very fertile. To create a better animal, we started a composite program introducing Red Angus and Gelbvieh. The calves were sensational. Unfortunately, the inherent infertility was going to take a very long time to overcome, so we did a wholesale change to Angus.

Today, reflecting on what we learnt, I believe that improvements can be made to any cattle breed, so we have embarked on a composite breeding program. We are breed agnostic and believe that the industry has lost sight

of many of the benefits that can be gained from Hybrid Vigour.

We are in the very early stages of its development, and you will find in the catalogue some great examples of where we are heading.

CALVING EASE

There is no future if cows or calves die. We aim to supply bulls that are reliable and are confident that our animals perform in line with their EBVs.

In summary we are bringing you animals that will produce more quality beef for less feed with impeccable temperament, marbling and high index rankings.

*Regards,
Johnny Kahlbetzer*

ROGER STANTON | Twynam Manager | 0497 553218

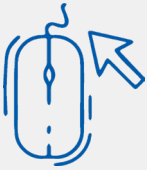
BULL GUARANTEE

We will provide a replacement bull, for any bull that becomes infertile or breaks down due to reasons other than injury or misadventure within 18 months of the sale.

HOW TO REGISTER with ELITE LIVESTOCK AUCTIONS



Simply go to www.elitelivestockauctions.com.au using your desktop, laptop, iPad, iPhone or android device.



Click on the **"Sign Up"** page / link



Create a bidding profile using the bidder registration page.
(You can either register as a livestock agent, company or private buyer)



Agree to the Elite Livestock Auctions Terms & Conditions and the Selling Agents Sale Terms & Conditions as printed in the official Sale Catalogue



Click **"Register"**



You will then be notified by email that an account has been created.



Once an account has been created you are all **"Set to Bid"**



Each Auction can then be viewed by clicking **"Live Auction"** logo on the Elite Livestock Auctions website.



Once you receive email notification that your account has been created please go to the sale you wish to bid at and click **"Request to Bid"**



The sale will then approve your application to bid and on the sale catalogue you will see **"✓ Bid Request Approved"**



On Sale day simply login, click **"Enter Auction"** on the catalogue page and you can start bidding.
(There is no need for software download)



At the completion of the auction, invoicing will be carried out as per your registration details by the Selling Agents.

Having trouble registering and logging in?
Contact Elite Livestock Auctions



1300 259 742

TWYMAN FEATURE SIREs

ANGUS BULLS

- **Glennoch Hinman – QBGH221** – An Angus Benchmarked sire. A rare animal with high IMF at 5.1 and PROVEN feed efficiency (through the Benchmarking program) with an NFI of -0.41. His other traits are very well balanced.
- **Wrigley Q81^{PV} – JVCQ81** – A bull we purchased for his combination of IMF and NFI. Still gathering data to determine how good he may be, but things are looking promising. IMF of 4.8, NFI of -0.62 and \$GN of \$315.
- **Twynam K051^{SV} – NXTK051** – A Twynam bred bull we have used a little bit of over the years with good structure and an IMF of 5.8.
- **Twynam Q11^{PV} – NXTQ11** – A great set of EBV's with IMF of 5.4 and \$GN at 342. He came 6th in his test for NFI.
- **Twynam Q69^{PV} – NXTQ69** – A growthy bull with a 600-day growth of 145 but with a Birth weight below 5. He came 2nd in our feed efficiency test.
- **Te Mania Perfectionism P1192^{SV} – VTMP1192** – A higher birthweight bull, who otherwise bends the curve. A son of Te Mania Kirby with an IMF of 7.5.
- **Banquet Garrett G272 – VONG272** – An Angus Benchmarked sire. An NFI of -0.79. His IMF is only 2.1 which is surprising considering his Benchmark results. A big bull with 600 Day of 143. Birthweight is 6.4, so not for heifers – saying that we haven't had any birthing problems with his progeny.
- **Twynam L96 – NXTL096** – A Twynam bred, Angus Benchmarked sire. A growthy bull (158 for 600 day) with good BW (2.7) and reasonable feed efficiency (proven through the Benchmarking program). A very solid bull with good structure, still working at 8 years of age.
- **G A R Home Town – USA19266718** – The most used semen sire in the USA. A truly elite sire with amazing EBVs. Calving Ease, great growth with moderate mature size and elite carcass traits. You won't find many sires with higher Marbling (5.1 imf) or \$Grain Index (394) and backed up by generations of proof like this one. A phenotypic standout - big-hipped, wide-based with an attractive herd bull presence all in a moderate stature.
- **Roseda Powerball23 F091 – USA19180956** – In the top 40 of all Angus animals in the \$Grain index at \$417. Twynam imported his semen. Known for Easy Calving, High Growth, High Marbling Genetics.

COMPOSITE BULLS

- **Leachman Docs Remedy** – A half Angus half Euro sire. From the Leachman 2023 catalogue – "After extensive testing and progeny data Docs Remedy has come to the forefront of our breeding program. A top 1% \$Feeder, he will sire high value steers along with productive females. He is one of the most powerful, dense, yet moderate and free moving sires in our lineup. Complete sires like him are hard to find ... but very easy to use."
- **Leachman Accelerate** – 9 breeds in his pedigree – 37% Angus, 34% Euro, 16% South Devon. Physically consistent progeny. He is moderate, balanced, thick made, wide based and gentle.
- **R&R Beefmaker 116D** – 87% Limousin, 7% Angus. A bull whose semen we imported from the USA for feed efficiency and who is performing well. A very growthy sire with huge EMA. He has a high BW EBV, but we have had no issues with his calves, which we attribute to the weight coming from length of the calves versus thickness.
- **Twynam P99** – A great looking bull with structure. There are four breeds in his pedigree being 33% Charolais, 33% Senepol, 17% Shorthorn and 17% Belmont Red.
- **Hooks Beacon 56B** – 100% Simmental. He is the highest dollar value Homozygous Polled Black Purebred Simmental bull ever generating \$API 185.6, \$TI 97 in a 6 frame package with added length, substance and muscle, Beacon is a true outlier in every sense of the word. Beacon is the total economic performance bull on very sound legs and feet. He has a top 1% calving ease and birth weight but with progeny that are in the top 15% for weaning and yearling weight. He then delivers carcasses in the top 1% of the 18 million cattle in the world's largest data bank (IGS), for both muscle and intramuscular fat and top 5% for meat tenderness. Beacon's final treat is that his females have good tight udders and will stay in your herd longer being in the top 10% for stability.
- **Wulfs Xcellsior X252X** – 100% Homozygous Polled Limousin. One of the world's most feed efficient sires, being in the top 1% for NFI in Vytelle's (Growsafe) database while also being in the top 5% for ADG. This low birth weight (top 10%) sire has a rock-solid pedigree behind him that supports his impressive performance and flawless phenotype composition. Extra thick & loaded with muscle shape he is attractive, deep bodied and big topped, He is a carcass machine. He scanned over an 18 inch REA. And is in the top 1% for yield.
- **Red Doc ET Lumbre 8509** – He is Santa Gertrudis and puts together one of the most balanced data sets in the breed. This bull was the 3rd most efficient bull of the 2019 Red Hot Bull Sale offering and had an amazing Cost of Gain of \$0.40 and a Feed to Gain ratio of 3.78 lbs per 1 lb. of gain. Lumbre's actuals, BW 56 lbs, WW 644 lbs, YW 1,267, REA 14.5 and IMF 5.20. support 8 EPDs in the top 25%, resulting in indexes of 5-15-4. A negative BW EPD and growth EPDs in the top 15% tell us no dollars will be left on the table when his offspring are weaned and moved to grass or the yard. Lumbre 8509 is the type and kind of bull that all industry members appreciate. His feeder calves are efficient and hit end point targets while his daughters are the type of female that keep a cowherd profitable.
- **Hollywood of Salacoa 23A53** – Hollywood is a standout Brangus sire who has breed progeny with strong industry appeal. A product of the renowned Salacoa Valley program, Hollywood is bred for the real-world challenges of tough environments. Hollywood progeny grow quickly and excel through to market with high EMA/IMF. Big and balanced EPD's with high carcass values, Top 2% REA, 40% IMF, 25% WW, 20% YW Moderate birth weight.
- **BLUE-E P326** – Purchased from the Jon Wright, who has been testing for feed efficiency for over 20 years. Ranked 9th in Vytelle's top 150 proven feed efficient bulls. A package of muscle with great eye appeal. 50/50 Angus/Shorthorn.
- **BLUE-E P3** – Similar to P326 with a more moderate look. While not in Vytelle's top 150 proven sires due to having less progeny tested, he is very feed efficient. 50/50 Angus/Shorthorn.

1**TWYNAM S0088 #**Vendor: **TWYNAM**

ID	NXT21S0088
BIRTH DATE	16/04/2021
WEIGHT	804kg

Very nice long bull, moderate Frame with depth and thickness consistently throughout, a nice well balanced bull all round with plenty of growth.



RENNYLEA K907 NORK907^{PV}
Sire: RENNYLEA M1223 NORM1223^{PV}
 RENNYLEA G262 NORG262^{PV}
 RENNYLEA K178 NORK178^{PV}
Dam: RENNYLEA P773 NORP773 #
 RENNYLEA K749 NORK749^{SV}

ANGUS BREEDING INDEX	+\$252	-
HEAVY GRAIN INDEX	+\$334	-

	BIRTH				GROWTH					FERTILITY		CARCASE							
	CE-D	CE-DTR	GL	BTH WT	200 WT	400 WT	600 WT	MCW	MILK	DTC	SCROTAL	DOC	NFI	CWT	EMA	RIB FAT	RUMP FAT	RBV%	IMF%
EBV	-3.3	-1.3	-6.8	6.1	58	103	141	113	21	-7.3	1	18	0.10	91	11.2	0.5	0.4	0.3	3.7
Acc	-	-	-	-	-	-	-	-	-	-	-	-	-	-	-	-	-	-	-
Perc	-	-	-	-	-	-	-	-	-	-	-	-	-	-	-	-	-	-	-

\$ Purchaser:

2**TWYNAM S0171 #**Vendor: **TWYNAM**

ID	NXT21S0171
BIRTH DATE	16/08/2021
WEIGHT	806kg

Eye catching depth of body, plenty of volume, very appealing bull all round.



RENNYLEA M1223 NORM1223^{PV}
Sire: TWYNAM Q31 NXTQ31^{PV}
 TWYNAM F108 NXTF108^{SV}

Dam: TWYNAM BASE COW #

ANGUS BREEDING INDEX	+\$188	-
HEAVY GRAIN INDEX	+\$254	-

	BIRTH				GROWTH					FERTILITY		CARCASE							
	CE-D	CE-DTR	GL	BTH WT	200 WT	400 WT	600 WT	MCW	MILK	DTC	SCROTAL	DOC	NFI	CWT	EMA	RIB FAT	RUMP FAT	RBV%	IMF%
EBV	-2.4	-0.5	-5.2	5.6	49	88	120	113	20	-5.6	0.6	25	0.06	66	4.7	0.5	-0.3	-0.1	3.8
Acc	-	-	-	-	-	-	-	-	-	-	-	-	-	-	-	-	-	-	-
Perc	-	-	-	-	-	-	-	-	-	-	-	-	-	-	-	-	-	-	-

\$ Purchaser:

3**TWYNAM S0207 #**Vendor: **TWYNAM**

ID	NXT21S0207
BIRTH DATE	24/08/2021
WEIGHT	812kg

Good length of body, well balanced bull, could be used for heifers.



TE MANIA LEARMONTH L635 VTML635^{SV}
Sire: TWYNAM Q144 NXTQ144^{SV}

EF COMPLEMENT 8088 USA16198796^{PV}
Dam: TWYNAM P7 NXTP7^{PV}
 TWYNAM M056 NXTM056^{SV}

ANGUS BREEDING INDEX	+\$209	40
HEAVY GRAIN INDEX	+\$282	34

	BIRTH				GROWTH					FERTILITY		CARCASE							
	CE-D	CE-DTR	GL	BTH WT	200 WT	400 WT	600 WT	MCW	MILK	DTC	SCROTAL	DOC	NFI	CWT	EMA	RIB FAT	RUMP FAT	RBV%	IMF%
EBV	6.3	5.7	-6.3	3.1	48	82	106	75	20	-4.1	0.2	26	0.30	61	4.9	1.2	1.3	0.1	2.3
Acc	50%	42%	61%	68%	62%	59%	60%	59%	52%	34%	56%	37%	51%	52%	54%	54%	48%	56%	
Perc	20	22	25	29	62	74	73	86	24	66	97	24	66	64	66	22	22	71	43

\$ Purchaser:

8

4

TWYNAM S0231 #

Vendor: TWYNAM

ID	NXT21S0231
BIRTH DATE	27/08/2021
WEIGHT	776kg

Nice length and depth, moves nicely, well muscled bull with plenty of growth and carcass. 30th FCR out of 113.



G A R PROPHET USA16295688 ^{SV}
Sire: TWYNAM Q5 NXTQ5 ^{PV}
 TWYNAM N203 NXTN203 ^{SV}
 TWYNAM D99 NXTD99 ^{PV}
Dam: TWYNAM F248 NXTF248 ^{DV}
 TWYNAM D90 NXTD90 ^{SV}

ANGUS BREEDING INDEX	+\$196	55
HEAVY GRAIN INDEX	+\$252	59

	BIRTH				GROWTH					FERTILITY		CARCASE							
	CE-D	CE-DTR	GL	BTH WT	200 WT	400 WT	600 WT	MCW	MILK	DTC	SCROTAL	DOC	NFI	CWT	EMA	RIB FAT	RUMP FAT	RBY%	IMF%
EBV	0.2	3.3	-4.1	4.9	51	89	115	108	12	-6.5	1.2	22	0.25	64	-0.3	-1.3	-1.9	-	3.3
Acc	51%	43%	62%	69%	63%	61%	61%	60%	56%	37%	58%	34%	51%	54%	53%	56%	56%	51%	58%
Perc	70	47	61	69	47	53	55	36	88	10	81	38	59	55	98	77	77	76	20

\$

Purchaser:

5

TWYNAM S0232 #

Vendor: TWYNAM

ID	NXT21S0232
BIRTH DATE	27/08/2021
WEIGHT	768kg

Great depth and length of body, this bull is a standout. 22nd FCR out of 113.



TE MANIA LAYCOCK L614 VTML614 ^{PV}
Sire: TWYNAM Q109 NXTQ109 ^{SV}
 TE MANIA BARUNAH H96 VTMH96 ^{SV}

Dam: TWYNAM Q550B NXTQ550B #
 BALLANGEICH M578 VSYM578 #

ANGUS BREEDING INDEX	+\$-	-
HEAVY GRAIN INDEX	+\$-	-

	BIRTH				GROWTH					FERTILITY		CARCASE							
	CE-D	CE-DTR	GL	BTH WT	200 WT	400 WT	600 WT	MCW	MILK	DTC	SCROTAL	DOC	NFI	CWT	EMA	RIB FAT	RUMP FAT	RBY%	IMF%
EBV	-	-	-	-	-	-	-	-	-	-	-	-	-	-	-	-	-	-	-
Acc	-	-	-	-	-	-	-	-	-	-	-	-	-	-	-	-	-	-	-
Perc	-	-	-	-	-	-	-	-	-	-	-	-	-	-	-	-	-	-	-

\$

Purchaser:

6

TWYNAM S0253 #

Vendor: TWYNAM

ID	NXT21S0253
BIRTH DATE	30/08/2021
WEIGHT	708kg

Great growth, nice length, even type and strong topline. Suitable for heifers.



TE MANIA JOE J963 VTMJ963 ^{SV}
Sire: TWYNAM Q8 NXTQ8 ^{PV}
 TWYNAM N019 NXTN019 ^{SV}

TE MANIA LATHAM L553 VTML553 ^{SV}
Dam: TWYNAM Q127 NXTQ127 ^{SV}
 TE MANIA MOONGARA F157 VTMF157 #

ANGUS BREEDING INDEX	+\$172	77
HEAVY GRAIN INDEX	+\$238	70

	BIRTH				GROWTH					FERTILITY		CARCASE							
	CE-D	CE-DTR	GL	BTH WT	200 WT	400 WT	600 WT	MCW	MILK	DTC	SCROTAL	DOC	NFI	CWT	EMA	RIB FAT	RUMP FAT	RBY%	IMF%
EBV	5.1	3.6	-6.3	2.3	41	75	104	91	25	-3.4	2.1	25	0.13	47	5.8	-1.6	-2.6	0.3	4.4
Acc	50%	41%	61%	69%	63%	61%	61%	60%	55%	33%	58%	42%	50%	54%	53%	55%	56%	50%	57%
Perc	30	43	25	16	86	88	77	65	5	82	48	27	43	93	55	82	86	59	7

\$

Purchaser:

7

TWYNAM S0267

Vendor: TWYNAM

ID	NXT21S0267
BIRTH DATE	1/09/2021
WEIGHT	718kg

Great length, easy moving well balanced bull.

G A R ASHLAND USA18217198 ^{PV}
Sire: G A R HOME TOWN USA19266718 ^{PV}
 CHAIR ROCK SURE FIRE 6095 USA18644754 #

Dam: TWYNAM BASE COW #



ANGUS BREEDING INDEX	+\$253	-
HEAVY GRAIN INDEX	+\$341	-

	BIRTH				GROWTH					FERTILITY		CARCASE							
	CE-D	CE-DTR	GL	BTH WT	200 WT	400 WT	600 WT	MCW	MILK	DTC	SCROTAL	DOC	NFI	CWT	EMA	RIB FAT	RUMP FAT	RBV%	IMF%
EBV	5.4	3	-6.9	2.2	52	92	114	68	20	-5.2	2.1	28	0.15	70	11.3	-1.4	-1.6	0.5	3.7
Acc	-	-	-	-	-	-	-	-	-	-	-	-	-	-	-	-	-	-	-
Perc	-	-	-	-	-	-	-	-	-	-	-	-	-	-	-	-	-	-	-

\$

Purchaser:

8

TWYNAM S0285

Vendor: TWYNAM

ID	NXT21S0285
BIRTH DATE	4/09/2021
WEIGHT	796kg

Plenty of bone, thickness and length, heavy muscle and nice top line.

RENNYLEA M1223 NORM1223 ^{PV}
Sire: TWYNAM Q31 NXTQ31 ^{PV}
 TWYNAM F108 NXTF108 ^{SV}
 EF COMPLEMENT 8088 USA16198796 ^{PV}
Dam: TWYNAM N050 NXTN050 ^{SV}
 TWYNAM L179 NXTL179 #



ANGUS BREEDING INDEX	+\$221	27
HEAVY GRAIN INDEX	+\$291	27

	BIRTH				GROWTH					FERTILITY		CARCASE							
	CE-D	CE-DTR	GL	BTH WT	200 WT	400 WT	600 WT	MCW	MILK	DTC	SCROTAL	DOC	NFI	CWT	EMA	RIB FAT	RUMP FAT	RBV%	IMF%
EBV	-2.1	-0.3	-5.8	5.6	50	86	117	98	19	-7.2	0.1	24	0.30	72	6.4	2.3	2	-0.1	3.4
Acc	51%	42%	65%	70%	63%	61%	61%	61%	53%	36%	58%	36%	54%	53%	53%	55%	55%	49%	57%
Perc	83	79	33	81	50	62	50	53	31	4	98	32	66	32	47	9	14	81	18

\$

Purchaser:

9

TWYNAM S0303

Vendor: TWYNAM

ID	NXT21S0303
BIRTH DATE	6/09/2021
WEIGHT	776kg

Nice length, mid maturing bull with plenty of carcass.

TUWHARETOA REGENT D145 BNAD145 ^{PV}
Sire: TWYNAM K051 NXTK051 ^{SV}
 TWYNAM G037 NXTG037 #
 TWYNAM H121 NXTH121 ^{SV}
Dam: TWYNAM M096 NXTM096 ^{SV}
 TWYNAM E257 NXTE257 ^{SV}



ANGUS BREEDING INDEX	+\$189	62
HEAVY GRAIN INDEX	+\$243	66

	BIRTH				GROWTH					FERTILITY		CARCASE							
	CE-D	CE-DTR	GL	BTH WT	200 WT	400 WT	600 WT	MCW	MILK	DTC	SCROTAL	DOC	NFI	CWT	EMA	RIB FAT	RUMP FAT	RBV%	IMF%
EBV	-1.7	-1.9	-3.9	6.4	48	83	109	106	9	-6.1	1.8	13	-0.02	66	6.4	-1.7	-2.8	0.7	3.4
Acc	52%	43%	63%	72%	65%	63%	64%	62%	55%	37%	59%	33%	54%	55%	54%	57%	57%	52%	58%
Perc	81	88	64	91	59	72	68	40	97	16	60	84	25	52	47	84	88	33	18

\$

Purchaser:

10

TWYNAM & BARNETT ANGUS • BULL SALE • 2023

10**TWYNAM S0312 #**Vendor: **TWYNAM**

ID	NXT21S0312
BIRTH DATE	7/09/2021
WEIGHT	758kg

Lovely moving bull, nice length of body with good depth throughout, plenty of volume. Suitable for heifers.

31st to 39th in ADG, RFI and FCR.

TWYNAM N039 NXTN039^{SV}

Sire: TWYNAM Q10 NXTQ10^{PV}

TWYNAM N051 NXTN051^{SV}

RENNYLEA K566 NORK566^{SV}

Dam: BALLANGEICH Q563 VSYQ563 #

BALLANGEICH K123 VSYK123 #



ANGUS BREEDING INDEX	+\$206	43
HEAVY GRAIN INDEX	+\$269	45

	BIRTH				GROWTH					FERTILITY		CARCASE							
	CE-D	CE-DTR	GL	BTH WT	200 WT	400 WT	600 WT	MCW	MILK	DTC	SCROTAL	DOC	NFI	CWT	EMA	RIB FAT	RUMP FAT	RBV%	IMF%
EBV	3.2	4.9	-4.1	3.2	43	80	107	82	16	-5.6	1.9	28	0.35	56	5.6	0.3	0.5	0.1	3.5
Acc	45%	36%	53%	68%	58%	55%	55%	54%	47%	29%	50%	27%	44%	47%	46%	48%	48%	43%	50%
Perc	47	29	61	31	79	78	71	78	59	25	56	18	71	78	57	41	35	71	17

\$ Purchaser:

11**TWYNAM S0318 #**Vendor: **TWYNAM**

ID	NXT21S0318
BIRTH DATE	9/09/2021
WEIGHT	746kg

Stretchy, nice moving well balanced bull, plenty of growth.

RENNYLEA M1223 NORM1223^{PV}

Sire: TWYNAM Q69 NXTQ69^{PV}

TWYNAM M155 NXTM155^{SV}

TWYNAM K051 NXTK051^{SV}

Dam: TWYNAM Q67 NXTQ67^{PV}

TWYNAM K025 NXTK025^{SV}



ANGUS BREEDING INDEX	+\$225	23
HEAVY GRAIN INDEX	+\$287	30

	BIRTH				GROWTH					FERTILITY		CARCASE							
	CE-D	CE-DTR	GL	BTH WT	200 WT	400 WT	600 WT	MCW	MILK	DTC	SCROTAL	DOC	NFI	CWT	EMA	RIB FAT	RUMP FAT	RBV%	IMF%
EBV	-2.6	4.2	-5.9	6.1	57	103	136	134	17	-7.1	2.4	12	-0.12	84	6.9	-1.2	-1.7	0.7	2.9
Acc	48%	39%	60%	69%	62%	60%	60%	59%	52%	32%	57%	30%	52%	52%	54%	54%	54%	47%	56%
Perc	85	37	31	88	21	16	15	9	49	5	36	86	16	9	41	75	74	33	28

\$ Purchaser:

12**TWYNAM S0324 #**Vendor: **TWYNAM**

ID	NXT21S0324
BIRTH DATE	10/09/2021
WEIGHT	786kg

Eye-catching depth of body all the way through, plenty of volume.

RENNYLEA M1223 NORM1223^{PV}

Sire: TWYNAM Q31 NXTQ31^{PV}

TWYNAM F108 NXTF108^{SV}

Dam: TWYNAM BASE COW #



ANGUS BREEDING INDEX	+\$161	-
HEAVY GRAIN INDEX	+\$212	-

	BIRTH				GROWTH					FERTILITY		CARCASE							
	CE-D	CE-DTR	GL	BTH WT	200 WT	400 WT	600 WT	MCW	MILK	DTC	SCROTAL	DOC	NFI	CWT	EMA	RIB FAT	RUMP FAT	RBV%	IMF%
EBV	-11.2	-7	-4.9	8	57	100	138	145	17	-6	1.5	9	0.01	84	4	-1	-1.5	0.3	2.5
Acc	-	-	-	-	-	-	-	-	-	-	-	-	-	-	-	-	-	-	-
Perc	-	-	-	-	-	-	-	-	-	-	-	-	-	-	-	-	-	-	-

\$ Purchaser:

13**TWYNAM S0325 #**Vendor: **TWYNAM**

ID	NXT21S0325
BIRTH DATE	10/09/2021
WEIGHT	790kg

Balanced bull with nice length and depth, move well with a strong topline.

TUWHARETOA REGENT D145 BNAD145^{PV}
Sire: GLENOCH HINMAN H221 QBGH221^{SV}
 GLENOCH FLOWER D80 QBGD80^{SV}
 TWYNAM H020 NXTH020^{SV}
Dam: TWYNAM L097 NXTL097^{SV}
 TWYNAM D5 NXTD5 #



ANGUS BREEDING INDEX	+\$204	46
HEAVY GRAIN INDEX	+\$265	48

	BIRTH				GROWTH				FERTILITY		CARCASE								
	CE-D	CE-DTR	GL	BTH WT	200 WT	400 WT	600 WT	MCW	MILK	DTC	SCROTAL	DOC	NFI	CWT	EMA	RIB FAT	RUMP FAT	RBY%	IMF%
EBV	1	-3.3	-5	5.2	56	96	129	115	20	-3.7	1.7	19	-0.21	78	9.9	-3.4	-5.7	1.9	1.9
Acc	56%	47%	67%	73%	68%	66%	67%	64%	60%	42%	64%	45%	56%	61%	60%	62%	62%	57%	63%
Perc	65	93	46	74	22	34	25	25	25	76	64	55	10	17	14	98	99	2	55

\$ Purchaser: _____

14**TWYNAM S0337 #**Vendor: **TWYNAM**

ID	NXT21S0337
BIRTH DATE	15/09/2021
WEIGHT	756kg

Well proportioned, nice thickness consistently throughout, moves nicely and carries himself extremely well.

TE MANIA JOE J963 VTMJ963^{SV}
Sire: TWYNAM Q11 NXTQ11^{PV}
 TWYNAM N161 NXTN161^{SV}
 TWYNAM N217 NXTN217^{SV}
Dam: TWYNAM Q49 NXTQ49^{PV}
 TWYNAM L124 NXTL124^{PV}



ANGUS BREEDING INDEX	+\$245	8
HEAVY GRAIN INDEX	+\$321	10

	BIRTH				GROWTH				FERTILITY		CARCASE								
	CE-D	CE-DTR	GL	BTH WT	200 WT	400 WT	600 WT	MCW	MILK	DTC	SCROTAL	DOC	NFI	CWT	EMA	RIB FAT	RUMP FAT	RBY%	IMF%
EBV	4.8	7.5	-4.3	4.4	59	108	146	137	21	-6.7	2.4	17	-0.20	84	4.4	-1.7	-1.6	-0.1	4.3
Acc	47%	36%	59%	68%	62%	59%	60%	59%	51%	29%	56%	31%	50%	52%	51%	53%	54%	47%	56%
Perc	33	9	57	58	14	10	7	7	17	8	36	63	10	9	72	84	73	81	8

\$ Purchaser: _____

15**TWYNAM S0377 #**Vendor: **TWYNAM**

ID	NXT21S0377
BIRTH DATE	24/09/2021
WEIGHT	792kg

Very well proportioned, moderate Frame and exceptional structure, suitable for heifers.

TWYNAM H111 NXTH111^{SV}
Sire: TWYNAM L096 NXTL096^{SV}
 TWYNAM J078 NXTJ078^{PV}
 TE MANIA GARTH G67 VTMG67^{PV}
Dam: TWYNAM M001 NXTM001^{SV}
 TWYNAM K009 NXTK009 #



ANGUS BREEDING INDEX	+\$250	7
HEAVY GRAIN INDEX	+\$315	12

	BIRTH				GROWTH				FERTILITY		CARCASE								
	CE-D	CE-DTR	GL	BTH WT	200 WT	400 WT	600 WT	MCW	MILK	DTC	SCROTAL	DOC	NFI	CWT	EMA	RIB FAT	RUMP FAT	RBY%	IMF%
EBV	7.5	7.8	-9.6	2.9	54	102	137	120	25	-8.2	4	23	-0.02	76	6.6	0.9	1	0.1	2.5
Acc	54%	44%	68%	73%	67%	65%	65%	64%	55%	39%	61%	48%	58%	60%	60%	60%	62%	56%	63%
Perc	12	7	3	25	33	18	14	20	5	1	4	34	25	21	44	28	26	71	38

\$ Purchaser: _____

16**TWYNAM S0392 #**Vendor: **TWYNAM**

ID	NXT21S0392
BIRTH DATE	27/09/2021
WEIGHT	738kg

Beautiful square well proportioned and nicely muscled bull, depth of body moderate framed and a very well put together bull all-round bull.



TUWHARETOA REGENT D145 BNAD145^{PV}
Sire: TWYNAM K051 NXTK051^{SV}
 TWYNAM G037 NXTG037 #

Dam: TWYNAM BASE COW #

ANGUS BREEDING INDEX	+\$217	-
HEAVY GRAIN INDEX	+\$279	-

	BIRTH				GROWTH					FERTILITY		CARCASE							
	CE-D	CE-DTR	GL	BTH WT	200 WT	400 WT	600 WT	MCW	MILK	DTC	SCROTAL	DOC	NFI	CWT	EMA	RIB FAT	RUMP FAT	RBV%	IMF%
EBV	2.9	3.6	-5.4	4.5	43	75	94	86	9	-7.1	2.3	13	0.21	55	7.1	-0.2	-0.7	0.5	4.3
Acc	-	-	-	-	-	-	-	-	-	-	-	-	-	-	-	-	-	-	-
Perc	-	-	-	-	-	-	-	-	-	-	-	-	-	-	-	-	-	-	-

\$ Purchaser:

17**TWYNAM S0396 #**Vendor: **TWYNAM**

ID	NXT21S0396
BIRTH DATE	27/09/2021
WEIGHT	712kg

Long stretchy type with nice depth and well balance.
 25th in FCR, 19th in ADG out of 113.



TWYNAM H111 NXTH111^{SV}
Sire: TWYNAM L096 NXTL096^{SV}
 TWYNAM J078 NXTJ078^{PV}
 RENNYLEA H434 NORH434^{SV}
Dam: RENNYLEA P81 NORP81^{SV}
 RENNYLEA G24 NORG24 #

ANGUS BREEDING INDEX	+\$247	8
HEAVY GRAIN INDEX	+\$314	13

	BIRTH				GROWTH					FERTILITY		CARCASE							
	CE-D	CE-DTR	GL	BTH WT	200 WT	400 WT	600 WT	MCW	MILK	DTC	SCROTAL	DOC	NFI	CWT	EMA	RIB FAT	RUMP FAT	RBV%	IMF%
EBV	6.6	6	-5.9	2.7	53	102	141	116	27	-8.3	4.5	16	0.33	91	4.1	0.7	0.3	-0.4	3.8
Acc	53%	42%	66%	72%	67%	65%	65%	63%	56%	38%	62%	50%	57%	60%	59%	60%	61%	56%	63%
Perc	18	19	31	22	33	19	10	24	2	1	2	70	69	4	76	32	38	91	13

\$ Purchaser:

18**TWYNAM S0436 #**Vendor: **TWYNAM**

ID	NXT21S0436
BIRTH DATE	17/10/2021
WEIGHT	766kg

Mid maturing high carcass bull, moves nicely with plenty of volume.
 23rd in FCR and 8th in ADG out of 113.



TWYNAM H111 NXTH111^{SV}
Sire: TWYNAM L096 NXTL096^{SV}
 TWYNAM J078 NXTJ078^{PV}

Dam: TWYNAM BASE COW #

ANGUS BREEDING INDEX	+\$234	-
HEAVY GRAIN INDEX	+\$296	-

	BIRTH				GROWTH					FERTILITY		CARCASE							
	CE-D	CE-DTR	GL	BTH WT	200 WT	400 WT	600 WT	MCW	MILK	DTC	SCROTAL	DOC	NFI	CWT	EMA	RIB FAT	RUMP FAT	RBV%	IMF%
EBV	6.5	8.2	-5.6	3	50	98	137	123	23	-7.4	2.1	21	0.03	89	6.4	1.2	0.6	0.1	2.9
Acc	-	-	-	-	-	-	-	-	-	-	-	-	-	-	-	-	-	-	-
Perc	-	-	-	-	-	-	-	-	-	-	-	-	-	-	-	-	-	-	-

\$ Purchaser:

19**TWYNAM S0437 #**Vendor: **TWYNAM**

ID	NXT21S0437
BIRTH DATE	17/10/2021
WEIGHT	716kg

Medium frame, good length and depth.



TWYNAM H111 NXTH111 ^{SV}
Sire: TWYNAM L096 NXTL096 ^{SV}
 TWYNAM J078 NXTJ078 ^{PV}
 TWYNAM J122 NXTJ122 ^{PV}
Dam: TWYNAM N162 NXTN162 ^{SV}
 TWYNAM H040 NXTH040 #

ANGUS BREEDING INDEX	+\$245	9
HEAVY GRAIN INDEX	+\$313	13

	BIRTH				GROWTH					FERTILITY		CARCASE							
	CE-D	CE-DTR	GL	BTH WT	200 WT	400 WT	600 WT	MCW	MILK	DTC	SCROTAL	DOC	NFI	CWT	EMA	RIB FAT	RUMP FAT	RBV%	IMF%
EBV	6.2	8.1	-6.6	3.4	55	103	149	126	26	-7	2.9	12	0.08	95	6.3	1	0.4	-0.1	3.2
Acc	51%	39%	66%	73%	67%	66%	66%	64%	54%	35%	61%	45%	60%	60%	59%	60%	61%	55%	63%
Perc	21	6	22	35	27	17	5	14	3	6	21	85	37	2	48	26	36	81	22

\$ Purchaser: _____

20**BARNETT S134 PV**Vendor: **BARNETT ANGUS**

ID	MBA21S134
BIRTH DATE	3/6/2021
WEIGHT	738kg

A deep chested big volume bull with top pedigree. His sire: P559 is a maternal brother to L519 and his dam is from multi-generation donor cows. Awesome growth, fertility and carcase!



RENNYLEA EDMUND E11 ^{PV}
Sire: RENNYLEA P559 ^{PV}
 RENNYLEA L507 ^{PV}
 V A R DISCOVERY 2240 ^{PV}
Dam: BARNETT DISCO GIRL N5 ^{PV}
 STRATHEWEN REGENT MITTAGONG J23 ^{PV}

ANGUS BREEDING INDEX	+\$257	4
ANGUS BREEDING LOW FEED COST INDEX	+\$431	3

	BIRTH				GROWTH					FERTILITY		CARCASE							
	CE-D	CE-DTR	GL	BTH WT	200 WT	400 WT	600 WT	MCW	MILK	D to CAL	SCROTAL	DOCILITY	NFI-F	CWT	EMA	RIB FAT	RUMP FAT	RBV%	IMF%
EBV	-3.8	-2.1	-5.4	5.3	67	118	155	135	14	-6.8	2.9	24	0.23	92	9	0.7	-0.2	-0.3	4.2
Acc	58%	58%	70%	70%	72%	70%	70%	68%	61%	41%	66%	47%	53%	61%	60%	62%	62%	55%	65%
Perc	89	89	39	76	3	3	3	8	73	7	21	30	57	3	20	32	48	88	8

\$ Purchaser: _____

21**BARNETT S174 PV**Vendor: **BARNETT ANGUS**

ID	MBA21S174
BIRTH DATE	1/7/2021
WEIGHT	736kg

Ticks a lot of boxes, this is a very long bull with a great shoulder set. He's a broad muscled bull with a lot of natural thickness



RENNYLEA EDMUND E11 ^{PV}
Sire: RENNYLEA P559 ^{PV}
 RENNYLEA L507 ^{PV}
 V A R GENERATION 2100 ^{PV}
Dam: BARNETT FIRST LADY N9 ^{PV}
 STRATHEWEN REGENT WILPENA J53 ^{PV}

ANGUS BREEDING INDEX	+\$226	23
ANGUS BREEDING LOW FEED COST INDEX	+\$337	25

	BIRTH				GROWTH					FERTILITY		CARCASE							
	CE-D	CE-DTR	GL	BTH WT	200 WT	400 WT	600 WT	MCW	MILK	D to CAL	SCROTAL	DOCILITY	NFI-F	CWT	EMA	RIB FAT	RUMP FAT	RBV%	IMF%
EBV	0.1	1.5	-8.8	4.7	54	106	134	108	21	-5.5	0.5	30	0.08	81	7.3	0	-1.9	0.5	2.5
Acc	58%	58%	71%	71%	72%	70%	70%	68%	62%	42%	66%	47%	54%	61%	60%	62%	62%	56%	65%
Perc	71	65	5	64	30	13	18	37	18	28	94	14	36	13	36	48	77	47	38

\$ Purchaser: _____

22

BARNETT S197 PV

Vendor: **BARNETT ANGUS**

ID	MBA21S197
BIRTH DATE	30/9/2021
WEIGHT	674kg

A well balanced great mover with good feet. Soft, thick and a phenotypic delight. His data is a predictive mating outcome as his genomics haven't returned yet



RENNYLEA EDMUND E11 PV
Sire: RENNYLEA P559 PV
 RENNYLEA L507 PV
 ESSLEMONT GENERAL L115 PV
Dam: AYRVALE QUEENSLIFF Q73 PV
 STRATHEWEN REGENT WILPENNA J53 PV

ANGUS BREEDING INDEX	+\$226	23
ANGUS BREEDING LOW FEED COST INDEX	+\$377	25

	BIRTH				GROWTH				FERTILITY			CARCASE							
	CE-D	CE-DTR	GL	BTH WT	200 WT	400 WT	600 WT	MCW	MILK	D to CAL	SCROTAL	DOCILITY	NFI-F	CWT	EMA	RIB FAT	RUMP FAT	RBV%	IMF%
EBV	2.2	4.1	-6.3	5.1	54	100	128	117	17	-7	2.8	19	0.26	72	9.6	-0.3	-2.1	1.1	2.5
Acc	66%	66%	82%	81%	79%	78&	79%	76%	69%	52%	74%	63%	61%	70%	68%	69%	70%	64%	71%
Perc	55	38	26	71	32	21	26	23	50	5	25	50	61	32	15	57	79	17	40

\$ Purchaser: _____

23

BARNETT THE BOSS S199 PV

Vendor: **BARNETT ANGUS**

ID	MBA21S199
BIRTH DATE	27/9/2021
WEIGHT	774kg

From the day he was born he was called The Boss. A very powerful gentle giant who dominates his space and oozes natural thickness and volume. Tremendous growth stats, CWT and a big set of nuts



LAWSONS MOMENTOUS M518 PV
Sire: MURDEDUKE QUARTERBACK Q011 PV
 MURDEDUKE BARUNAH N026 PV
 V A R DISCOVERY 2240 PV
Dam: BARNETT DISCO GIRL N2 PV
 STRATHEWEN REGENT MITTAGONG J23 PV

ANGUS BREEDING INDEX	+\$236	14
ANGUS BREEDING LOW FEED COST INDEX	+\$426	4

	BIRTH				GROWTH				FERTILITY			CARCASE							
	CE-D	CE-DTR	GL	BTH WT	200 WT	400 WT	600 WT	MCW	MILK	D to CAL	SCROTAL	DOCILITY	NFI-F	CWT	EMA	RIB FAT	RUMP FAT	RBV%	IMF%
EBV	2.1	-3.5	-4.9	5.8	64	123	167	154	20	-4.6	3.9	24	0.27	92	8.8	-1.3	-2.3	0.2	3.9
Acc	60%	60%	72%	73%	74%	72%	72%	69%	61%	40%	70%	58%	53%	62%	63%	64%	64%	58%	66%
Perc	56	93	47	84	5	1	1	2	22	52	5	31	62	3	21	77	82	66	12

\$ Purchaser: _____

24

BARNETT S198 PV

Vendor: **BARNETT ANGUS**

ID	MBA21S198
BIRTH DATE	30/9/2021
WEIGHT	722kg

Balanced good mover with great feet. An all-rounder with a superior profile and a great pedigree



RENNYLEA EDMUND E11 PV
Sire: RENNYLEA P559 PV
 RENNYLEA L507 PV
 V A R LEGEND 5019 SV
Dam: BARNETT LADY LEGEND Q8 SV
 BARNETT FIRST LADY N9 PV

ANGUS BREEDING INDEX	+\$241	11
ANGUS BREEDING LOW FEED COST INDEX	+\$424	4

	BIRTH				GROWTH				FERTILITY			CARCASE							
	CE-D	CE-DTR	GL	BTH WT	200 WT	400 WT	600 WT	MCW	MILK	D to CAL	SCROTAL	DOCILITY	NFI-F	CWT	EMA	RIB FAT	RUMP FAT	RBV%	IMF%
EBV	0.1	1.3	-7.4	5.7	65	118	152	141	14	-5.9	3.1	26	-0.04	90	7.1	-1.1	-2.7	0.6	2.6
Acc	56%	56%	71%	69%	71%	68%	69%	66%	59%	38%	65%	44%	52%	60%	59%	60%	60%	53%	63%
Perc	71	67	14	82	4	3	4	5	75	19	16	24	23	4	38	73	87	40	36

\$ Purchaser: _____

24A BARNETT S137

Vendor: **BARNETT ANGUS**

ID	MBA21S137
BIRTH DATE	9/6/2021
WEIGHT	770kg

A seriously stout and deep bull that is solid as a rock. He's a medium framed bull with great feet and is soft as butter. His data is a predictive mating outcome as his genomics haven't returned yet. He's bred true to type just like his predictable mother



BALDRIDGE BEAST MODE B074^{PV}
Sire: KENNY'S CREEK BEAST MODE Q5
 KENNY'S CREEK BARA N210^{SV}
 V A R GENERATION 2100^{PV}
Dam: BARNETT FIRST LADY N10^{PV}
 STRATHEWEN REGENT WILPENA J53^{PV}

ANGUS BREEDING INDEX	+246	-
ANGUS BREEDING LOW FEED COST INDEX	+406	-

	BIRTH				GROWTH					FERTILITY		CARCASE							
	CE-D	CE-DTR	GL	BTH WT	200 WT	400 WT	600 WT	MCW	MILK	D to CAL	SCROTAL	DOCILITY	NFI-F	CWT	EMA	RIB FAT	RUMP FAT	RBV%	IMF%
EBV	7.8	-1.2	-7.2	2.1	60	106	131	100	16	-4.9	3.1	37	0.11	74	8.5	1	0.5	0.1	3.1
Acc	65%	65%	73%	75%	75%	73%	74%	72%	68%	47%	71%	56%	57%	67%	65%	66%	66%	62%	68%
Perc	11	83	15	14	12	11	21	50	58	45	17	3	41	25	24	27	35	75	25

\$ Purchaser:

25 GENEFLOW BA MOMENTUM S178^{PV}

Vendor: **GENEFLOW**

ID	GFF21S178
BIRTH DATE	3/6/2021
WEIGHT	840kg

A massive stylish sire which exhibits thickness from nose to tail. Carries himself well and oozes volume.



RENNYLEA EDMUND E11^{PV}
Sire: STONEY POINT MOMENTUM M07^{PV}
 STONEY POINT YANKEE QUEEN K32^{PV}
 DEER VALLEY PATRIOT 3222^{SV}
Dam: STONEY POINT SKYE P028^{SV}
 STONEY POINT SKYE M334^{PV}

ANGUS BREEDING INDEX	+\$217	32
ANGUS BREEDING LOW FEED COST INDEX	+\$385	20

	BIRTH				GROWTH					FERTILITY		CARCASE							
	CE-D	CE-DTR	GL	BTH WT	200 WT	400 WT	600 WT	MCW	MILK	D to CAL	SCROTAL	DOCILITY	NFI-F	CWT	EMA	RIB FAT	RUMP FAT	RBV%	IMF%
EBV	4.4	3.7	-6.8	4.2	56	99	127	116	17	-6	2.4	15	-0.02	71	4.6	0.8	-0.4	0.4	1.5
Acc	55%	55%	66	67%	68%	65%	66%	64%	58%	38%	63%	55%	48%	57%	56%	58%	58%	53%	60%
Perc	36	43	20	53	24	26	28	25	50	18	36	75	25	34	70	30	51	53	67

\$ Purchaser:

26 GENEFLOW BA MOMENTOUS S164^{PV}

Vendor: **GENEFLOW**

ID	GFF21S164
BIRTH DATE	11/6/2021
WEIGHT	772kg

A very sound and good footed bull with loads of natural thickness out of a big framed functional efficient cow



G A R MOMENTUM^{PV}
Sire: LAWSONS MOMENTOUS M518^{PV}
 LAWSONS AFRICA H229^{SV}
 MATAURI REALITY 839[#]
Dam: STONEY POINT FAIRY L116^{SV}
 COORONG FAIRY J67[#]

ANGUS BREEDING INDEX	+\$226	23
ANGUS BREEDING LOW FEED COST INDEX	+\$346	50

	BIRTH				GROWTH					FERTILITY		CARCASE							
	CE-D	CE-DTR	GL	BTH WT	200 WT	400 WT	600 WT	MCW	MILK	D to CAL	SCROTAL	DOCILITY	NFI-F	CWT	EMA	RIB FAT	RUMP FAT	RBV%	IMF%
EBV	1	0.1	-7.2	3.7	50	83	105	78	23	-3.8	2.8	30	0.23	50	12.5	-0.9	-1.2	0.8	4.6
Acc	66%	66%	74%	74%	75%	73%	74%	72%	68%	48%	71%	61%	60%	67%	66%	68%	68%	63%	69%
Perc	65	76	15	41	52	71	74	83	10	74	23	13	57	90	4	69	66	28	5

\$ Purchaser:

27

GENEFLOW BA NOMAD S166^{PV}

Vendor: **GENEFLOW**

ID	GFF21S166
BIRTH DATE	6/8/2021
WEIGHT	696kg

Great fertility and Feed Efficiency this is a powerful bull with a terrific loin and muscle pattern and a free easy mover

MURDEDUKE BROKEN BOW L161^{PV}
Sire: STONEY POINT NOMAD N365^{SV}
 MURDEDUKE JEDDA L214^{SV}
 STONEY POINT LOVIS L178^{SV}
Dam: STONEY POINT CHAMPAGNE P365^{SV}
 STONEY POINT CHAMPAGNE L527[#]



ANGUS BREEDING INDEX	+\$216	33
ANGUS BREEDING LOW FEED COST INDEX	+\$371	29

	BIRTH				GROWTH				FERTILITY			CARCASE							
	CE-D	CE-DTR	GL	BTH WT	200 WT	400 WT	600 WT	MCW	MILK	D to CAL	SCROTAL	DOCILITY	NFI-F	CWT	EMA	RIB FAT	RUMP FAT	RBV%	IMF%
EBV	6	5.7	-1.8	4.1	54	101	133	102	17	-3.8	2.3	14	-0.27	80	1.6	-0.6	0	-0.8	4.5
Acc	60%	60%	68%	72%	73%	71%	72%	69%	60%	36%	69%	56%	49%	62%	62%	62%	62%	56%	65%
Perc	23	22	89	51	33	22	19	47	53	74	40	78	7	14	94	62	44	97	6

\$ Purchaser: _____

28

GENEFLOW BA MOMENTOUS S17^{PV}

Vendor: **GENEFLOW**

ID	GFF21S17
BIRTH DATE	15/11/2021
WEIGHT	740kg

One of 5 very consistent flush brothers expressing great type and kind. Very docile muscular bull with great carcase values

G A R MOMENTUM^{PV}
Sire: LAWSONS MOMENTOUS M518^{PV}
 LAWSONS AFRICA H229^{SV}
 TE MANIA GASKIN G555^{SV}
Dam: MURDEDUKE JEDDA M093^{PV}
 MURDEDUKE JEDDA J218^{PV}



ANGUS BREEDING INDEX	+\$214	34
ANGUS BREEDING LOW FEED COST INDEX	+\$359	39

	BIRTH				GROWTH				FERTILITY			CARCASE							
	CE-D	CE-DTR	GL	BTH WT	200 WT	400 WT	600 WT	MCW	MILK	D to CAL	SCROTAL	DOCILITY	NFI-F	CWT	EMA	RIB FAT	RUMP FAT	RBV%	IMF%
EBV	-3.8	-3.8	-6.7	4.2	56	98	132	122	18	-4.5	1.8	31	0.15	76	10.8	0.8	0.5	0.3	4
Acc	66%	66%	73%	75%	76%	74%	74%	73%	69%	48%	72%	64%	60%	68%	67%	68%	68%	63%	70%
Perc	89	94	21	53	24	28	20	18	41	55	60	12	46	22	9	30	35	59	10

\$ Purchaser: _____

29

GENEFLOW BA MOMENTOUS S18^{PV}

Vendor: **GENEFLOW**

ID	GFF21S18
BIRTH DATE	15/11/2021
WEIGHT	678kg

One of 5 very consistent flush brothers expressing great type and kind. Look at his IMF: 5.5! His EMA 11.6! Very wide topped bull with a great rear-end

G A R MOMENTUM^{PV}
Sire: LAWSONS MOMENTOUS M518^{PV}
 LAWSONS AFRICA H229^{SV}
 TE MANIA GASKIN G555^{SV}
Dam: MURDEDUKE JEDDA M093^{PV}
 MURDEDUKE JEDDA J218^{PV}



ANGUS BREEDING INDEX	+\$206	44
ANGUS BREEDING LOW FEED COST INDEX	+\$318	70

	BIRTH				GROWTH				FERTILITY			CARCASE							
	CE-D	CE-DTR	GL	BTH WT	200 WT	400 WT	600 WT	MCW	MILK	D to CAL	SCROTAL	DOCILITY	NFI-F	CWT	EMA	RIB FAT	RUMP FAT	RBV%	IMF%
EBV	-0.5	-5	-6.9	2.7	41	76	97	78	18	-4.4	0.8	31	0.59	51	11.6	0.9	0.9	0.3	5.5
Acc	66%	66%	73%	75%	76%	74%	74%	73%	69%	48%	72%	64%	60%	68%	67%	68%	69%	63%	70%
Perc	75	96	18	22	86	85	87	83	41	58	90	12	91	88	6	28	28	59	2

\$ Purchaser: _____

30**GENEFLOW BA MOMENTOUS S19^{PV}**Vendor: **GENEFLOW**

ID	GFF21S19
BIRTH DATE	18/11/2021
WEIGHT	728kg

One of 5 very consistent flush brothers expressing great type and kind. With an EMA 12.6 and IMF 5.2 he is a free easy moving attractive bull



G A R MOMENTUM^{PV}
Sire: LAWSONS MOMENTOUS M518^{PV}
 LAWSONS AFRICA H229^{SV}
 TE MANIA GASKIN G555^{SV}
Dam: MURDEDUKE JEDDA M093^{PV}
 MURDEDUKE JEDDA J218^{PV}

ANGUS BREEDING INDEX	+\$225	23
ANGUS BREEDING LOW FEED COST INDEX	+\$363	36

	BIRTH				GROWTH					FERTILITY		CARCASE							
	CE-D	CE-DTR	GL	BTH WT	200 WT	400 WT	600 WT	MCW	MILK	D to CAL	SCROTAL	DOCILITY	NFI-F	CWT	EMA	RIB FAT	RUMP FAT	RBY%	IMF%
EBV	-4.8	-3.9	-5.3	6	57	99	134	117	19	-3.8	2.1	31	0.35	79	12.6	-0.7	0.3	0.3	5.2
Acc	66%	66%	73%	74%	75%	74%	74%	73%	69%	48%	71%	64%	60%	68%	67%	68%	68%	63%	70%
Perc	92	94	41	86	20	24	17	23	33	74	48	12	71	17	4	65	38	59	3

\$ Purchaser:

31**GENEFLOW BA MOMENTOUS S20^{PV}**Vendor: **GENEFLOW**

ID	GFF21S20
BIRTH DATE	18/11/2021
WEIGHT	732kg

One of 5 very consistent flush brothers expressing great type and kind. With an EMA of 13.2 and an IMF of 4.6, he'll contribute quality meat and you'll get paid for it!



G A R MOMENTUM^{PV}
Sire: LAWSONS MOMENTOUS M518^{PV}
 LAWSONS AFRICA H229^{SV}
 TE MANIA GASKIN G555^{SV}
Dam: MURDEDUKE JEDDA M093^{PV}
 MURDEDUKE JEDDA J218^{PV}

ANGUS BREEDING INDEX	+\$208	41
ANGUS BREEDING LOW FEED COST INDEX	+\$339	56

	BIRTH				GROWTH					FERTILITY		CARCASE							
	CE-D	CE-DTR	GL	BTH WT	200 WT	400 WT	600 WT	MCW	MILK	D to CAL	SCROTAL	DOCILITY	NFI-F	CWT	EMA	RIB FAT	RUMP FAT	RBY%	IMF%
EBV	-5.7	-3.4	-5.9	5.4	53	93	118	113	19	-4.2	1.8	31	0.40	70	13.2	-2.3	-2.9	1.1	4.6
Acc	66%	66%	73%	75%	76%	74%	74%	73%	69%	48%	72%	64%	60%	68%	67%	68%	68%	63%	70%
Perc	93	93	31	78	34	42	47	28	33	64	60	12	77	39	3	91	89	14	5

\$ Purchaser:

32**GENEFLOW BA MOMENTOUS S21^{PV}**Vendor: **GENEFLOW**

ID	GFF21S21
BIRTH DATE	19/11/2021
WEIGHT	704kg

One of 5 very consistent flush brothers expressing great type and kind. Another docile bull with great carcass values. Long smooth necked bull with a great EMA and IMF



G A R MOMENTUM^{PV}
Sire: LAWSONS MOMENTOUS M518^{PV}
 LAWSONS AFRICA H229^{SV}
 TE MANIA GASKIN G555^{SV}
Dam: MURDEDUKE JEDDA M093^{PV}
 MURDEDUKE JEDDA J218^{PV}

ANGUS BREEDING INDEX	+\$209	41
ANGUS BREEDING LOW FEED COST INDEX	+\$321	68

	BIRTH				GROWTH					FERTILITY		CARCASE							
	CE-D	CE-DTR	GL	BTH WT	200 WT	400 WT	600 WT	MCW	MILK	D to CAL	SCROTAL	DOCILITY	NFI-F	CWT	EMA	RIB FAT	RUMP FAT	RBY%	IMF%
EBV	-6.3	-4.8	-5.7	4.9	52	90	112	96	18	-3.9	0.5	31	-0.02	71	11	-1.4	-1.4	0.9	4.4
Acc	66%	66%	73%	75%	76%	74%	74%	73%	69%	48%	72%	64%	60%	68%	67%	68%	69%	63%	70%
Perc	94	96	34	69	42	50	62	56	41	72	94	12	25	34	8	79	69	23	7

\$ Purchaser:

33**GENEFLOW BA BEASTMODE S23^{PV}**Vendor: **GENEFLOW**

ID	GFF21S23
BIRTH DATE	11/12/2021
WEIGHT	692kg

A terrific growthy Beast Mode son with a top 1% NFI and awesome CWT. This big volume bull has a super neck extension great feet and is spot on for your heifers.



G A R PROPHET^{PV}
Sire: BALDRIDGE BEAST MODE B074^{PV}
 BALDRIDGE ISABEL Y69[#]
 TE MANIA GASKIN G555^{SV}
Dam: MURDEDUKE PANDA K443^{PV}
 MURDEDUKE PANDA D40^{PV}

ANGUS BREEDING INDEX	+\$201	50
ANGUS BREEDING LOW FEED COST INDEX	+\$372	29

	BIRTH				GROWTH					FERTILITY			CARCASE						
	CE-D	CE-DTR	GL	BTH WT	200 WT	400 WT	600 WT	MCW	MILK	D to CAL	SCROTAL	DOCILITY	NFI-F	CWT	EMA	RIB FAT	RUMP FAT	RBV%	IMF%
EBV	4.7	0.6	-4.2	3.4	66	116	154	137	18	-2.4	0.6	30	-0.64	94	1.7	-0.5	-1.4	0	1.1
Acc	66%	66%	72%	73%	74%	73%	73%	72%	68%	48%	71%	61%	58%	67%	66%	67%	67%	63%	69%
Perc	34	73	59	35	3	3	3	7	43	93	93	14	1	3	93	60	69	76	77

\$ Purchaser: _____

34**REILAND SALTER S623^{PV}**Vendor: **GENEFLOW**

ID	NLR21S623
BIRTH DATE	6/8/2021
WEIGHT	714kg

Tremendous growth, scrotal size and IMF, this is a very strong topped long bull with a deep HQ. He has great neck extension and a smooth shoulder



V A R GENERATION 2100^{PV}
Sire: TWYNAM N037^{SV}
 TWYNAM D156[#]
 AYRVALE MONTANA M13^{PV}
Dam: REILAND WILCOOLA Q1059^{SV}
 REILAND WILCOOLA M999[#]

ANGUS BREEDING INDEX	+\$206	44
ANGUS BREEDING LOW FEED COST INDEX	+\$347	49

	BIRTH				GROWTH					FERTILITY			CARCASE						
	CE-D	CE-DTR	GL	BTH WT	200 WT	400 WT	600 WT	MCW	MILK	D to CAL	SCROTAL	DOCILITY	NFI-F	CWT	EMA	RIB FAT	RUMP FAT	RBV%	IMF%
EBV	-5.7	-0.4	-6.8	6.1	62	109	143	116	15	-3.7	4.4	21	0.35	86	7.5	-1.2	-2.6	-0.1	3.9
Acc	54%	54%	69%	71%	71%	69%	69%	66%	59%	36%	65%	37%	50%	59%	59%	61%	61%	54%	63%
Perc	93	80	20	88	7	9	9	24	64	76	2	41	75	7	34	75	86	81	12

\$ Purchaser: _____

35**REILAND SAWTELL S628^{PV}**Vendor: **GENEFLOW**

ID	NLR21S628
BIRTH DATE	25/8/2021
WEIGHT	768kg

A slick skinned trim long bodied bull with a smooth front and great neck extension. He has an EMA of 16.2 and a carcass weight of +83. Combine that with his retail beef yield in the top 1% means you'll get paid where its measured



ESSLEMONT GENERAL N12^{PV}
Sire: ESSLEMONT QUOKKA Q24^{PV}
 ESSLEMONT NUCKLE N7^{PV}
 MERRIBROOK INDEX N12^{PV}
Dam: REILAND BRADSHAW Q884^{SV}
 REILAND BRADSHAW K1289[#]

ANGUS BREEDING INDEX	+\$260	4
ANGUS BREEDING LOW FEED COST INDEX	+\$408	9

	BIRTH				GROWTH					FERTILITY			CARCASE						
	CE-D	CE-DTR	GL	BTH WT	200 WT	400 WT	600 WT	MCW	MILK	D to CAL	SCROTAL	DOCILITY	NFI-F	CWT	EMA	RIB FAT	RUMP FAT	RBV%	IMF%
EBV	1.4	4.8	-2.0	3	53	95	128	97	22	-5.5	2.3	24	0.30	83	16.2	-1.9	-3.8	2.5	2
Acc	54%	54%	70%	72%	72%	69%	69%	67%	58%	33%	65%	46%	49%	59%	58%	60%	61%	53%	63%
Perc	62	31	87	27	33	35	26	55	16	28	40	31	66	11	1	87	95	1	52

\$ Purchaser: _____

36

TWYNAM S0047

Vendor: 

ID	NXT21S0047
BIRTH DATE	18/03/2021
WEIGHT	862kg

Angus/Santa X good frame and length of body, moves well with consistent depth.



KR 189 / 11 #

Sire: RED DOC DIABLO 6306 SGUSA20164169 #
RED DOC 3167 #

RENNYLEA K835 NORK835 PV

Dam: RENNYLEA P1130 NORP1130 PV
RENNYLEA L1216 NORL1216 SV

ANGUS BREEDING INDEX	+\$-	-
HEAVY GRAIN INDEX	+\$-	-

	BIRTH				GROWTH					FERTILITY		CARCASE								
	CE-D	CE-DTR	GL	BTH WT	200 WT	400 WT	600 WT	MCW	MILK	DTC	SCROTAL	DOC	NFI	CWT	EMA	RIB FAT	RUMP FAT	RBY%	IMF%	
EBV	-	-	-	-	-	-	-	-	-	-	-	-	-	-	-	-	-	-	-	-
Acc	-	-	-	-	-	-	-	-	-	-	-	-	-	-	-	-	-	-	-	-
Perc	-	-	-	-	-	-	-	-	-	-	-	-	-	-	-	-	-	-	-	-

\$ Purchaser:

37

TWYNAM S0068

Vendor: 

ID	NXT21S0068
BIRTH DATE	27/03/2021
WEIGHT	808kg

Outstanding Ultrablack bull, nicely balanced with depth of body and volume, A stand out for me.



NEW VISION OF SALACOA 209Y2 #

Sire: HOLLYWOOD OF SALACOA 23A53 IMU13R23A53 #
MS SVF PATTON 23Y66 #

RENNYLEA K599 NORK599 SV

Dam: BROWN MTN AGEE P16 ELZP16 #
BROWN MTN AGEE L100 ELZL100 #

9th FCR, 3rd ADG out of 48.

ANGUS BREEDING INDEX	+\$-	-
HEAVY GRAIN INDEX	+\$-	-

	BIRTH				GROWTH					FERTILITY		CARCASE								
	CE-D	CE-DTR	GL	BTH WT	200 WT	400 WT	600 WT	MCW	MILK	DTC	SCROTAL	DOC	NFI	CWT	EMA	RIB FAT	RUMP FAT	RBY%	IMF%	
EBV	-	-	-	-	-	-	-	-	-	-	-	-	-	-	-	-	-	-	-	-
Acc	-	-	-	-	-	-	-	-	-	-	-	-	-	-	-	-	-	-	-	-
Perc	-	-	-	-	-	-	-	-	-	-	-	-	-	-	-	-	-	-	-	-

\$ Purchaser:

38

TWYNAM S0112

Vendor: 

ID	NXT21S0112
BIRTH DATE	27/07/2021
WEIGHT	700kg

Long stretchy bull, strong top line.



26th RFI, 31st FCR out of 113.

TCA Visionary #

Sire: BLUE-E P3 DWJP3 #
Blue-E E27L #

TE MANIA JEROME J131 VTMJ131 PV

Dam: TWYNAM Q145 NXTQ145 SV
TE MANIA LOWAN J458 VTMJ458 #

ANGUS BREEDING INDEX	+\$-	-
HEAVY GRAIN INDEX	+\$-	-

	BIRTH				GROWTH					FERTILITY		CARCASE								
	CE-D	CE-DTR	GL	BTH WT	200 WT	400 WT	600 WT	MCW	MILK	DTC	SCROTAL	DOC	NFI	CWT	EMA	RIB FAT	RUMP FAT	RBY%	IMF%	
EBV	-	-	-	-	-	-	-	-	-	-	-	-	-	-	-	-	-	-	-	-
Acc	-	-	-	-	-	-	-	-	-	-	-	-	-	-	-	-	-	-	-	-
Perc	-	-	-	-	-	-	-	-	-	-	-	-	-	-	-	-	-	-	-	-

\$ Purchaser:

39

TWYNAM S0130

Vendor: 

ID	NXT21S0130
BIRTH DATE	4/08/2021
WEIGHT	814kg

Moves well, well portioned bull with depth and volume.



Leachman Doc X124B #
Sire: Leachman Docs Remedy U683E U683E #
LCoC STABILIZER BX512 #

Dam: TWYNAM F1 B049 NXTF1B049 #

ANGUS BREEDING INDEX	+\$-	-
HEAVY GRAIN INDEX	+\$-	-

	BIRTH				GROWTH					FERTILITY		CARCASE								
	CE-D	CE-DTR	GL	BTH WT	200 WT	400 WT	600 WT	MCW	MILK	DTC	SCROTAL	DOC	NFI	CWT	EMA	RIB FAT	RUMP FAT	RBY%	IMF%	
EBV	-	-	-	-	-	-	-	-	-	-	-	-	-	-	-	-	-	-	-	-
Acc	-	-	-	-	-	-	-	-	-	-	-	-	-	-	-	-	-	-	-	-
Perc	-	-	-	-	-	-	-	-	-	-	-	-	-	-	-	-	-	-	-	-

\$ Purchaser:

40

TWYNAM S0483

Vendor: 

ID	NXT21S0483
BIRTH DATE	5/08/2021
WEIGHT	766kg

Later maturing, nice long bull with plenty of bone and depth.
20th in RFI out of 113.



Sire: TWYNAM P99 #

TWYNAM E159 NXTE159^{SV}
Dam: TWYNAM J096 NXTJ096^{PV}
TWYNAM D1 NXTD1^{SV}

ANGUS BREEDING INDEX	+\$-	-
HEAVY GRAIN INDEX	+\$-	-

	BIRTH				GROWTH					FERTILITY		CARCASE								
	CE-D	CE-DTR	GL	BTH WT	200 WT	400 WT	600 WT	MCW	MILK	DTC	SCROTAL	DOC	NFI	CWT	EMA	RIB FAT	RUMP FAT	RBY%	IMF%	
EBV	-	-	-	-	-	-	-	-	-	-	-	-	-	-	-	-	-	-	-	-
Acc	-	-	-	-	-	-	-	-	-	-	-	-	-	-	-	-	-	-	-	-
Perc	-	-	-	-	-	-	-	-	-	-	-	-	-	-	-	-	-	-	-	-

\$ Purchaser:

41

TWYNAM S0529

Vendor: 

ID	NXT21S0529
BIRTH DATE	6/08/2021
WEIGHT	698kg

Carries himself very well, moves nicely with consistent depth throughout.
16th in RFI out of 73.



WULFS SIRLOIN 3172S #
Sire: WULFS XCELLSIOR X252X NALF1972210500 #
WULFS MISSIVE 2258M #

Dam: TE MANIA MOONGARA K220 VTMK220 #

ANGUS BREEDING INDEX	+\$-	-
HEAVY GRAIN INDEX	+\$-	-

	BIRTH				GROWTH					FERTILITY		CARCASE								
	CE-D	CE-DTR	GL	BTH WT	200 WT	400 WT	600 WT	MCW	MILK	DTC	SCROTAL	DOC	NFI	CWT	EMA	RIB FAT	RUMP FAT	RBY%	IMF%	
EBV	-	-	-	-	-	-	-	-	-	-	-	-	-	-	-	-	-	-	-	-
Acc	-	-	-	-	-	-	-	-	-	-	-	-	-	-	-	-	-	-	-	-
Perc	-	-	-	-	-	-	-	-	-	-	-	-	-	-	-	-	-	-	-	-

\$ Purchaser:

42

TWYNAM S0165

Vendor: 

ID	NXT21S0165
BIRTH DATE	15/08/2021
WEIGHT	754kg

This composite bull has volume, nicely balanced, and would compliment any crossbreeding operation.
15th RFI out of 113.



BLUE-E M310 #
Sire: **BLUE-E P326 DWJP326 #**
BLUE-EL79 #

Dam: **TWYNAM F1 B147 NXTF1B147 #**

ANGUS BREEDING INDEX	+\$-	-
HEAVY GRAIN INDEX	+\$-	-

	BIRTH				GROWTH					FERTILITY		CARCASE								
	CE-D	CE-DTR	GL	BTH WT	200 WT	400 WT	600 WT	MCW	MILK	DTC	SCROTAL	DOC	NFI	CWT	EMA	RIB FAT	RUMP FAT	RBY%	IMF%	
EBV	-	-	-	-	-	-	-	-	-	-	-	-	-	-	-	-	-	-	-	-
Acc	-	-	-	-	-	-	-	-	-	-	-	-	-	-	-	-	-	-	-	-
Perc	-	-	-	-	-	-	-	-	-	-	-	-	-	-	-	-	-	-	-	-

\$ Purchaser:

43

TWYNAM S0198

Vendor: 

ID	NXT21S0198
BIRTH DATE	23/08/2021
WEIGHT	812kg

Nice length and depth, well muscled bull with plenty of carcass.



LEACHMAN ADVANCE S019A #
Sire: **LEACHMAN ACCELERATE X166D X166D #**
DAM IS GRU STABILIZER AX103 #

Dam: **TWYNAM F1 B137 NXTF1B137 #**

ANGUS BREEDING INDEX	+\$-	-
HEAVY GRAIN INDEX	+\$-	-

	BIRTH				GROWTH					FERTILITY		CARCASE								
	CE-D	CE-DTR	GL	BTH WT	200 WT	400 WT	600 WT	MCW	MILK	DTC	SCROTAL	DOC	NFI	CWT	EMA	RIB FAT	RUMP FAT	RBY%	IMF%	
EBV	-	-	-	-	-	-	-	-	-	-	-	-	-	-	-	-	-	-	-	-
Acc	-	-	-	-	-	-	-	-	-	-	-	-	-	-	-	-	-	-	-	-
Perc	-	-	-	-	-	-	-	-	-	-	-	-	-	-	-	-	-	-	-	-

\$ Purchaser:

44

TWYNAM S0224

Vendor: 

ID	NXT21S0224
BIRTH DATE	27/08/2021
WEIGHT	690kg

Blue - E composite bull, nice length and depth, good growth and carcass characteristics.



BLUE-E M310 #
Sire: **BLUE-E P326 DWJP326 #**
BLUE-EL79 #

Dam: **TWYNAM F1T138 F1T138 #**

ANGUS BREEDING INDEX	+\$-	-
HEAVY GRAIN INDEX	+\$-	-

	BIRTH				GROWTH					FERTILITY		CARCASE								
	CE-D	CE-DTR	GL	BTH WT	200 WT	400 WT	600 WT	MCW	MILK	DTC	SCROTAL	DOC	NFI	CWT	EMA	RIB FAT	RUMP FAT	RBY%	IMF%	
EBV	-	-	-	-	-	-	-	-	-	-	-	-	-	-	-	-	-	-	-	-
Acc	-	-	-	-	-	-	-	-	-	-	-	-	-	-	-	-	-	-	-	-
Perc	-	-	-	-	-	-	-	-	-	-	-	-	-	-	-	-	-	-	-	-

\$ Purchaser:

45

TWYNAM S0326

Vendor: 

ID	NXT21S0326
BIRTH DATE	10/09/2021
WEIGHT	730kg

Wulf's Xcellsior x252x son, heavy muscled, high yielding bull, nicely balanced.



WULFS SIRLOIN 3172S #
Sire: WULFS XCELLSIOR X252X NALF1972210500 #
 WULFS MISSIVE 2258M #
 TE MANIA GOVERNOR G576 VTMG576 PV
Dam: TE MANIA LOWAN J468 VTMJ468 #
 TE MANIA LOWAN F531 VTMF531 #

ANGUS BREEDING INDEX	+\$-	-
HEAVY GRAIN INDEX	+\$-	-

	BIRTH				GROWTH					FERTILITY		CARCASE								
	CE-D	CE-DTR	GL	BTH WT	200 WT	400 WT	600 WT	MCW	MILK	DTC	SCROTAL	DOC	NFI	CWT	EMA	RIB FAT	RUMP FAT	RBY%	IMF%	
EBV	-	-	-	-	-	-	-	-	-	-	-	-	-	-	-	-	-	-	-	-
Acc	-	-	-	-	-	-	-	-	-	-	-	-	-	-	-	-	-	-	-	-
Perc	-	-	-	-	-	-	-	-	-	-	-	-	-	-	-	-	-	-	-	-

\$ Purchaser:

46

TWYNAM S0291

Vendor: 

ID	NXT21S0291
BIRTH DATE	5/09/2021
WEIGHT	802kg

This unique bull has depth, length of body and volume, move well and complimented with growth and yield.



Sire: BLUE-E P3 DWJP3 #
Dam: TWYNAM F1 B092 NXTF1B092 #

ANGUS BREEDING INDEX	+\$-	-
HEAVY GRAIN INDEX	+\$-	-

	BIRTH				GROWTH					FERTILITY		CARCASE								
	CE-D	CE-DTR	GL	BTH WT	200 WT	400 WT	600 WT	MCW	MILK	DTC	SCROTAL	DOC	NFI	CWT	EMA	RIB FAT	RUMP FAT	RBY%	IMF%	
EBV	-	-	-	-	-	-	-	-	-	-	-	-	-	-	-	-	-	-	-	-
Acc	-	-	-	-	-	-	-	-	-	-	-	-	-	-	-	-	-	-	-	-
Perc	-	-	-	-	-	-	-	-	-	-	-	-	-	-	-	-	-	-	-	-

\$ Purchaser:

47

TWYNAM S0304

Vendor: 

ID	NXT21S0304
BIRTH DATE	6/09/2021
WEIGHT	762kg

Later maturing high carcass bull, well proportioned muscle. 9th RFI out of 113.



Sire: TWYNAM P99 #
 AYRVALE BARTEL E7 HIOE7 PV
Dam: RENNYLEA P31 NORP31 PV
 RENNYLEA E5 NORE5 PV

ANGUS BREEDING INDEX	+\$-	-
HEAVY GRAIN INDEX	+\$-	-

	BIRTH				GROWTH					FERTILITY		CARCASE								
	CE-D	CE-DTR	GL	BTH WT	200 WT	400 WT	600 WT	MCW	MILK	DTC	SCROTAL	DOC	NFI	CWT	EMA	RIB FAT	RUMP FAT	RBY%	IMF%	
EBV	-	-	-	-	-	-	-	-	-	-	-	-	-	-	-	-	-	-	-	-
Acc	-	-	-	-	-	-	-	-	-	-	-	-	-	-	-	-	-	-	-	-
Perc	-	-	-	-	-	-	-	-	-	-	-	-	-	-	-	-	-	-	-	-

\$ Purchaser:

48

TWYNAM S0480 #

Vendor: **TWYNAM**

ID	NXT21S0480
BIRTH DATE	6/09/2021
WEIGHT	752kg

Another Wulf Xcellsior x252x son, well proportioned bull, depth and volume. Sure to add plenty of carcass into any beef operation.



WULFS SIRLOIN 3172S #
Sire: WULFS XCELLSIOR X252X NALF1972210500 #
 WULFS MISSIVE 2258M #
 RENNYLEA L1164 NORL1164^{PV}
Dam: RENNYLEA P204 NORP204^{PV}
 RENNYLEA K1108 NORK1108^{SV}

ANGUS BREEDING INDEX	+\$-	-
HEAVY GRAIN INDEX	+\$-	-

	BIRTH				GROWTH					FERTILITY		CARCASE								
	CE-D	CE-DTR	GL	BTH WT	200 WT	400 WT	600 WT	MCW	MILK	DTC	SCROTAL	DOC	NFI	CWT	EMA	RIB FAT	RUMP FAT	RBY%	IMF%	
EBV	-	-	-	-	-	-	-	-	-	-	-	-	-	-	-	-	-	-	-	-
Acc	-	-	-	-	-	-	-	-	-	-	-	-	-	-	-	-	-	-	-	-
Perc	-	-	-	-	-	-	-	-	-	-	-	-	-	-	-	-	-	-	-	-

\$ Purchaser:

49

TWYNAM S0482 #

Vendor: **TWYNAM**

ID	NXT21S0482
BIRTH DATE	6/09/2021
WEIGHT	760kg

Wulf Xcellsior X252X son, these bulls combined muscle and softness to produce high quality & high yielding progeny.



WULFS SIRLOIN 3172S #
Sire: WULFS XCELLSIOR X252X NALF1972210500 #
 WULFS MISSIVE 2258M #
 RENNYLEA L1164 NORL1164^{PV}
Dam: RENNYLEA P204 NORP204^{PV}
 RENNYLEA K1108 NORK1108^{SV}

ANGUS BREEDING INDEX	+\$-	-
HEAVY GRAIN INDEX	+\$-	-

	BIRTH				GROWTH					FERTILITY		CARCASE								
	CE-D	CE-DTR	GL	BTH WT	200 WT	400 WT	600 WT	MCW	MILK	DTC	SCROTAL	DOC	NFI	CWT	EMA	RIB FAT	RUMP FAT	RBY%	IMF%	
EBV	-	-	-	-	-	-	-	-	-	-	-	-	-	-	-	-	-	-	-	-
Acc	-	-	-	-	-	-	-	-	-	-	-	-	-	-	-	-	-	-	-	-
Perc	-	-	-	-	-	-	-	-	-	-	-	-	-	-	-	-	-	-	-	-

\$ Purchaser:

50

TWYNAM S0321 #

Vendor: **TWYNAM**

ID	NXT21S0321
BIRTH DATE	9/09/2021
WEIGHT	626kg

Easy moving, long bull that possesses high fertility and carcass.



WAGYU GENETICS L0180 #
Sire: 3D Genetics N0345 3DWFN0345 #
 COATES NAMI C025 #
 NAQA2 NAQA2^{PV}
Dam: TWYNAM F108 NXTF108^{SV}
 NXTZ65 NXTZ65^{SV}

ANGUS BREEDING INDEX	+\$-	-
HEAVY GRAIN INDEX	+\$-	-

	BIRTH				GROWTH					FERTILITY		CARCASE								
	CE-D	CE-DTR	GL	BTH WT	200 WT	400 WT	600 WT	MCW	MILK	DTC	SCROTAL	DOC	NFI	CWT	EMA	RIB FAT	RUMP FAT	RBY%	IMF%	
EBV	-	-	-	-	-	-	-	-	-	-	-	-	-	-	-	-	-	-	-	-
Acc	-	-	-	-	-	-	-	-	-	-	-	-	-	-	-	-	-	-	-	-
Perc	-	-	-	-	-	-	-	-	-	-	-	-	-	-	-	-	-	-	-	-

\$ Purchaser:

51

TWYNAM S0493 #

Vendor: TWYNAM

ID	NXT21S0493
BIRTH DATE	3/09/2021
WEIGHT	766kg

High growth, eye catching bull is another one of our Wulf Xcellsior x252x sons, later maturing bull with carcass and yield.



WULFS SIRLOIN 3172S #
Sire: WULFS XCELLSIOR X252X NALF1972210500 #
 WULFS MISSIVE 2258M #
 RENNYLEA G317 NORG317 PV
Dam: TWYNAM N019 NXTN019 SV
 TWYNAM H078 NXTH078 SV

ANGUS BREEDING INDEX	+\$-	-
HEAVY GRAIN INDEX	+\$-	-

	BIRTH				GROWTH					FERTILITY		CARCASE								
	CE-D	CE-DTR	GL	BTH WT	200 WT	400 WT	600 WT	MCW	MILK	DTC	SCROTAL	DOC	NFI	CWT	EMA	RIB FAT	RUMP FAT	RBY%	IMF%	
EBV	-	-	-	-	-	-	-	-	-	-	-	-	-	-	-	-	-	-	-	-
Acc	-	-	-	-	-	-	-	-	-	-	-	-	-	-	-	-	-	-	-	-
Perc	-	-	-	-	-	-	-	-	-	-	-	-	-	-	-	-	-	-	-	-

\$	Purchaser:
----	------------

52

TWYNAM S0364 #

Vendor: TWYNAM

ID	NXT21S0364
BIRTH DATE	19/09/2021
WEIGHT	780kg

Displaying tropical characteristics, this slick coated composite bull also has nice balance and depth, Sire Blue - E P326 compliments proven carcass traits.
 7th in RFI out of 113.



BLUE-E M310 #
Sire: BLUE-E P326 DWJP326 #
 BLUE-EL79 #

Dam: TWYNAM 3209 NXT9-3209 #

ANGUS BREEDING INDEX	+\$-	-
HEAVY GRAIN INDEX	+\$-	-

	BIRTH				GROWTH					FERTILITY		CARCASE								
	CE-D	CE-DTR	GL	BTH WT	200 WT	400 WT	600 WT	MCW	MILK	DTC	SCROTAL	DOC	NFI	CWT	EMA	RIB FAT	RUMP FAT	RBY%	IMF%	
EBV	-	-	-	-	-	-	-	-	-	-	-	-	-	-	-	-	-	-	-	-
Acc	-	-	-	-	-	-	-	-	-	-	-	-	-	-	-	-	-	-	-	-
Perc	-	-	-	-	-	-	-	-	-	-	-	-	-	-	-	-	-	-	-	-

\$	Purchaser:
----	------------

53

TWYNAM S0394 #

Vendor: TWYNAM

ID	NXT21S0394
BIRTH DATE	27/09/2021
WEIGHT	636kg

Another Blue - E P326, gives this bull nice depth, length and carcass.



BLUE-E M310 #
Sire: BLUE-E P326 DWJP326 #
 BLUE-EL79 #

Dam: TWYNAM 3062 NXT9-3062 #

ANGUS BREEDING INDEX	+\$-	-
HEAVY GRAIN INDEX	+\$-	-

	BIRTH				GROWTH					FERTILITY		CARCASE								
	CE-D	CE-DTR	GL	BTH WT	200 WT	400 WT	600 WT	MCW	MILK	DTC	SCROTAL	DOC	NFI	CWT	EMA	RIB FAT	RUMP FAT	RBY%	IMF%	
EBV	-	-	-	-	-	-	-	-	-	-	-	-	-	-	-	-	-	-	-	-
Acc	-	-	-	-	-	-	-	-	-	-	-	-	-	-	-	-	-	-	-	-
Perc	-	-	-	-	-	-	-	-	-	-	-	-	-	-	-	-	-	-	-	-

\$	Purchaser:
----	------------

54**TWYNAM S0413 #**Vendor: **TWYNAM**

ID	NXT21S0413
BIRTH DATE	2/10/2021
WEIGHT	766kg

Nice length, depth and softness, nice topline and moves well.
21st in FCR and 11th in ADG out of 113.

Sire: **TWYNAM Q138 NXTQ138^{SV}**Dam: **TWYNAM BB68 NXTB-68 #**

ANGUS BREEDING INDEX	+\$-	-
HEAVY GRAIN INDEX	+\$-	-

	BIRTH				GROWTH					FERTILITY		CARCASE								
	CE-D	CE-DTR	GL	BTH WT	200 WT	400 WT	600 WT	MCW	MILK	DTC	SCROTAL	DOC	NFI	CWT	EMA	RIB FAT	RUMP FAT	RBV%	IMF%	
EBV	-	-	-	-	-	-	-	-	-	-	-	-	-	-	-	-	-	-	-	-
Acc	-	-	-	-	-	-	-	-	-	-	-	-	-	-	-	-	-	-	-	-
Perc	-	-	-	-	-	-	-	-	-	-	-	-	-	-	-	-	-	-	-	-

\$ Purchaser:

55**TWYNAM T0004 #**Vendor: **TWYNAM**

ID	NXT22T0004
BIRTH DATE	14/02/2022
WEIGHT	628kg

Glenoch Hinman H221 Sire, mid maturing, very structurally correct and quiet.



TUWHARETOA REGENT D145 BNAD145^{PV}
Sire: **GLENOCH HINMAN H221 QBGH221^{SV}**
GLENOCH FLOWER D80 QBGD80^{SV}

TWYNAM K051 NXTK051^{SV}
Dam: **TWYNAM Q67 NXTQ67^{PV}**
TWYNAM K025 NXTK025^{SV}

ANGUS BREEDING INDEX	+\$213	35
HEAVY GRAIN INDEX	+\$281	34

	BIRTH				GROWTH					FERTILITY		CARCASE							
	CE-D	CE-DTR	GL	BTH WT	200 WT	400 WT	600 WT	MCW	MILK	DTC	SCROTAL	DOC	NFI	CWT	EMA	RIB FAT	RUMP FAT	RBV%	IMF%
EBV	3.4	0.6	-3.7	4	50	90	118	110	18	-5.5	1.9	16	-0.15	76	6.6	-2.4	-4.4	0.8	4.4
Acc	56%	47%	67%	73%	69%	67%	67%	65%	61%	44%	64%	48%	57%	62%	61%	63%	63%	58%	65%
Perc	45	73	67	48	48	52	49	33	42	28	56	71	13	22	44	92	97	28	7

\$ Purchaser:

56**TWYNAM T0055^{PV}**Vendor: **TWYNAM**

ID	NXT22T0055
BIRTH DATE	9/03/2022
WEIGHT	652kg

Well proportioned bull with depth and volume. Top 1% of all Angus for All the Indexes.



E W A PEYTON 642 USA18675107^{PV}
Sire: **ROSEDA POWERBALL23 F091 USA19180956^{PV}**
ROSEDA BLACKCAP B103 D118 USA18821897 #

TE MANIA GARTH G67 VTMG67^{PV}
Dam: **TWYNAM M010 NXTM010^{SV}**
TWYNAM K071 NXTK071^{SV}

ANGUS BREEDING INDEX	+\$291	1
HEAVY GRAIN INDEX	+\$404	1

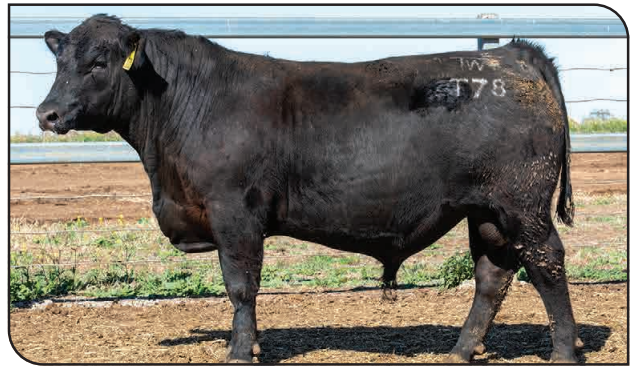
	BIRTH				GROWTH					FERTILITY		CARCASE							
	CE-D	CE-DTR	GL	BTH WT	200 WT	400 WT	600 WT	MCW	MILK	DTC	SCROTAL	DOC	NFI	CWT	EMA	RIB FAT	RUMP FAT	RBV%	IMF%
EBV	7	4.5	-7	2.4	73	132	165	141	25	-6.8	2.6	30	-0.01	89	5.9	1.8	2.1	-1.1	4
Acc	55%	45%	69%	71%	71%	68%	69%	68%	62%	36%	65%	34%	52%	61%	61%	61%	60%	55%	65%
Perc	15	33	17	17	1	1	1	5	5	7	29	14	26	5	53	14	13	99	10

\$ Purchaser:

57**TWYNAM T0078 #**Vendor: **TWYNAM**

ID	NXT22T0078
BIRTH DATE	12/03/2022
WEIGHT	640kg

Lovely, soft easy moving, well balanced bull.



E W A PEYTON 642 USA18675107 ^{PV}
Sire: ROSEDA POWERBALL23 F091 USA19180956 ^{PV}
 ROSEDA BLACKCAP B103 D118 USA18821897 #
 PATHFINDER GENERAL K7 SMPK7 ^{SV}
Dam: RENNYLEA P1111 NORP1111 #
 RENNYLEA G473 NORG473 ^{SV}

ANGUS BREEDING INDEX	+\$265	-
HEAVY GRAIN INDEX	+\$363	-

	BIRTH				GROWTH					FERTILITY		CARCASE							
	CE-D	CE-DTR	GL	BTH WT	200 WT	400 WT	600 WT	MCW	MILK	DTC	SCROTAL	DOC	NFI	CWT	EMA	RIB FAT	RUMP FAT	RBV%	IMF%
EBV	0.9	1.2	-4.7	4.9	75	123	154	136	14	-5.4	2.4	8	0.02	99	7.9	-0.9	-2.6	0.1	3.3
Acc	-	-	-	-	-	-	-	-	-	-	-	-	-	-	-	-	-	-	-
Perc	-	-	-	-	-	-	-	-	-	-	-	-	-	-	-	-	-	-	-

\$ Purchaser:

58**TWYNAM T0097 ^{PV}**Vendor: **TWYNAM**

ID	NXT22T0097
BIRTH DATE	14/03/2022
WEIGHT	628kg

Nice young bull with plenty of growth, covers ground nicely. 16th NFI out of 107.



BANQUET DUNCAN D412 VOND412 ^{SV}
Sire: BANQUET GARRETT G272 VONG272 ^{SV}
 BANQUET WIVEM C368 VONC368 #
 MURRAY PROCEED M204 NURM204 ^{PV}
Dam: ESSELMONT QUINCE Q23 WWEQ23 ^{PV}
 ESSELMONT NUTTELLA N11 WWEN11 ^{PV}

ANGUS BREEDING INDEX	+\$185	66
HEAVY GRAIN INDEX	+\$248	62

	BIRTH				GROWTH					FERTILITY		CARCASE							
	CE-D	CE-DTR	GL	BTH WT	200 WT	400 WT	600 WT	MCW	MILK	DTC	SCROTAL	DOC	NFI	CWT	EMA	RIB FAT	RUMP FAT	RBV%	IMF%
EBV	-10.6	6.3	-3.7	8.5	66	113	159	143	16	-2.9	3.1	24	-0.59	85	8.1	-4.6	-4.2	0.7	2.6
Acc	57%	45%	71%	72%	73%	71%	71%	68%	62%	39%	67%	53%	57%	64%	64%	64%	65%	57%	66%
Perc	99	17	67	99	3	5	2	5	57	89	16	29	1	8	28	99	96	33	35

\$ Purchaser:

59**TWYNAM T0099 ^E**Vendor: **TWYNAM**

ID	NXT22T0099
BIRTH DATE	15/03/2022
WEIGHT	538kg

Lovely square bull, structurally correct with nice top line.



JINDRA ACCLAIM USA17972810 ^{SV}
Sire: TWYNAM Q21 NXTQ21 ^{PV}
 TWYNAM K023 NXTK023 ^{SV}
 RENNYLEA KODAK K522 NORK522 ^{SV}
Dam: KELLY ANGUS KODAK P89 GXNP89 ^{SV}
 LAWSONS TANK E572 VLYE572 #

ANGUS BREEDING INDEX	+\$183	-
HEAVY GRAIN INDEX	+\$239	-

	BIRTH				GROWTH					FERTILITY		CARCASE							
	CE-D	CE-DTR	GL	BTH WT	200 WT	400 WT	600 WT	MCW	MILK	DTC	SCROTAL	DOC	NFI	CWT	EMA	RIB FAT	RUMP FAT	RBV%	IMF%
EBV	5.6	5.2	-6.6	3.5	49	93	124	131	10	-4.6	1.7	12	-0.28	70	2.7	-1.1	-2.2	0.3	3.2
Acc	-	-	-	-	-	-	-	-	-	-	-	-	-	-	-	-	-	-	-
Perc	-	-	-	-	-	-	-	-	-	-	-	-	-	-	-	-	-	-	-

\$ Purchaser:

60**TWYNAM T0115^{PV}**Vendor: **TWYNAM**

ID	NXT22T0115
BIRTH DATE	17/03/2022
WEIGHT	610kg

There is a lot to like about this bull, very nicely balanced with good depth and volume. Plenty of growth and also suitable for heifers.



TC FRANKLIN 619 USA15462648 #
Sire: WATTLETOP FRANKLIN G188 NWPG188^{SV}
 WATTLETOP BARUNAH E295 NWPE295^{DV}
 TOPBOS AMBASSADOR F4 DBLF4^{PV}
Dam: LAWSONS AMBASSADOR J1246 VLYJ1246^{SV}
 LAWSONS PROGRESS G363 VLYG363 #

ANGUS BREEDING INDEX	+\$211	38
HEAVY GRAIN INDEX	+\$294	25

	BIRTH				GROWTH					FERTILITY		CARCASE							
	CE-D	CE-DTR	GL	BTH WT	200 WT	400 WT	600 WT	MCW	MILK	DTC	SCROTAL	DOC	NFI	CWT	EMA	RIB FAT	RUMP FAT	RBV%	IMF%
EBV	8	7.1	-3.5	-0.2	52	93	124	98	24	-4.2	3.3	12	-0.33	68	1.9	0.4	-0.9	-0.7	4.9
Acc	65%	56%	75%	74%	75%	73%	73%	73%	69%	47%	71%	57%	60%	67%	67%	68%	68%	63%	69%
Perc	10	11	70	2	39	43	35	53	7	64	12	86	5	44	92	38	60	96	4

\$ Purchaser:

61**TWYNAM T119^{SV}**Vendor: **TWYNAM**

ID	NXT22T0119
BIRTH DATE	19/03/2022
WEIGHT	608kg

Beautiful soft young bull, nice skin, moves well with plenty of carcass. 10th in NFI out of 107.



BANQUET DUNCAN D412 VOND412^{SV}
Sire: BANQUET GARRETT G272 VONG272^{SV}
 BANQUET WIVEM C368 VONC368 #
 TOPBOS AMBASSADOR F4 DBLF4^{PV}
Dam: LAWSONS AMBASSADOR J1327 VLYJ1327^{SV}
 LAWSONS NEW DAY G350 VLYG350 #

ANGUS BREEDING INDEX	+\$155	-
HEAVY GRAIN INDEX	+\$210	-

	BIRTH				GROWTH					FERTILITY		CARCASE							
	CE-D	CE-DTR	GL	BTH WT	200 WT	400 WT	600 WT	MCW	MILK	DTC	SCROTAL	DOC	NFI	CWT	EMA	RIB FAT	RUMP FAT	RBV%	IMF%
EBV	0.2	-0.4	-0.8	5.5	50	91	129	124	19	-2.9	3.5	17	-0.43	61	3.4	-2.1	-2.7	0.3	3.3
Acc	-	-	-	-	-	-	-	-	-	-	-	-	-	-	-	-	-	-	-
Perc	-	-	-	-	-	-	-	-	-	-	-	-	-	-	-	-	-	-	-

\$ Purchaser:

62**TWYNAM T0125^{PV}**Vendor: **TWYNAM**

ID	NXT22T0125
BIRTH DATE	21/03/2022
WEIGHT	632kg

Later maturing bull, with good growth figures, +3.1 for Birth Weight so would be good for heifers. 17th NFI, 18th FCR and 22nd ADG out of 107.



BANQUET DUNCAN D412 VOND412^{SV}
Sire: BANQUET GARRETT G272 VONG272^{SV}
 BANQUET WIVEM C368 VONC368 #
 RENNYLEA KODAK K522 NORK522^{SV}
Dam: KELLY ANGUS KODAK P89 GXNP89^{SV}
 LAWSONS TANK E572 VLYE572 #

ANGUS BREEDING INDEX	+\$144	92
HEAVY GRAIN INDEX	+\$197	89

	BIRTH				GROWTH					FERTILITY		CARCASE							
	CE-D	CE-DTR	GL	BTH WT	200 WT	400 WT	600 WT	MCW	MILK	DTC	SCROTAL	DOC	NFI	CWT	EMA	RIB FAT	RUMP FAT	RBV%	IMF%
EBV	4.2	8	-1.7	3.1	44	86	123	128	15	-2.2	3.8	18	-0.52	54	1.3	-0.9	-1.4	-0.4	4.4
Acc	57%	45%	72%	72%	72%	70%	71%	68%	63%	39%	67%	50%	56%	64%	63%	64%	65%	58%	66%
Perc	38	6	90	29	78	62	37	12	65	95	6	59	2	82	95	69	69	91	7

\$ Purchaser:

63**TWYNAM T0159^{SV}**Vendor: **TWYNAM**

ID	NXT22T0159
BIRTH DATE	2/04/2022
WEIGHT	558kg

Nicely muscled, well balanced bull.



WRIGLEY N33 JVCN33^{SV}
Sire: WRIGLEY Q81 JVCQ81^{PV}
 WRIGLEY N34 JVCN34^{SV}
 OUR FARM J102 HQSJ102^{SV}
Dam: TWYNAM Q560B NXTQ560B[#]

ANGUS BREEDING INDEX	+\$209	41
HEAVY GRAIN INDEX	+\$286	31

	BIRTH				GROWTH					FERTILITY		CARCASE							
	CE-D	CE-DTR	GL	BTH WT	200 WT	400 WT	600 WT	MCW	MILK	DTC	SCROTAL	DOC	NFI	CWT	EMA	RIB FAT	RUMP FAT	RBV%	IMF%
EBV	4.3	-1.2	-1.5	3.4	47	87	117	84	24	-4.4	1.7	-	-0.26	69	1.5	-0.8	-1.5	-0.1	5.1
Acc	49%	38%	64%	68%	68%	65%	65%	64%	56%	30%	62%	-	46%	55%	54%	56%	57%	49%	60%
Perc	37	85	91	35	63	61	51	76	8	58	64	-	7	42	94	67	71	81	3

\$ Purchaser: _____

64**TWYNAM T0163^{PV}**Vendor: **TWYNAM**

ID	NXT22T0163
BIRTH DATE	3/04/2022
WEIGHT	556kg

Mid maturing, well proportioned bull, even type and strong top line. 22nd out of 107 in FCR and 18th in ADG.



TE MANIA KIRBY K138 VTMK138^{PV}
Sire: TE MANIA PERFECTIONISM P1192 VTMP1192^{SV}
 TE MANIA BARUNAH G450 VTMG450[#]
 TE MANIA GARTH G67 VTMG67^{PV}
Dam: TWYNAM M011 NXTM011^{SV}
 TWYNAM K032 NXTK032[#]

ANGUS BREEDING INDEX	+\$187	65
HEAVY GRAIN INDEX	+\$260	52

	BIRTH				GROWTH					FERTILITY		CARCASE							
	CE-D	CE-DTR	GL	BTH WT	200 WT	400 WT	600 WT	MCW	MILK	DTC	SCROTAL	DOC	NFI	CWT	EMA	RIB FAT	RUMP FAT	RBV%	IMF%
EBV	-4.2	1.7	0.3	4.8	45	71	92	74	19	-7.2	1.4	27	-0.06	37	-	0.5	1.2	-1.1	5.4
Acc	55%	46%	70%	70%	70%	68%	69%	67%	60%	39%	65%	42%	53%	60%	59%	60%	61%	55%	64%
Perc	90	63	98	67	71	93	91	87	33	4	75	21	21	99	98	36	23	99	2

\$ Purchaser: _____

65**TWYNAM T0180[#]**Vendor: **TWYNAM**

ID	NXT22T0180
BIRTH DATE	7/04/2022
WEIGHT	632kg

Consistent depth, a nicely balanced bull. 10th in ADG out of 107.



TE MANIA JEROME J131 VTMJ131^{PV}
Sire: TE MANIA L64 VTML64^{PV}
 TE MANIA JEDDA J1139 VTMJ1139^{PV}
 TOPBOS AMBASSADOR F4 DBLF4^{PV}
Dam: LAWSONS AMBASSADOR J1327 VLYJ1327^{SV}
 LAWSONS NEW DAY G350 VLYG350[#]

ANGUS BREEDING INDEX	+\$209	-
HEAVY GRAIN INDEX	+\$276	-

	BIRTH				GROWTH					FERTILITY		CARCASE							
	CE-D	CE-DTR	GL	BTH WT	200 WT	400 WT	600 WT	MCW	MILK	DTC	SCROTAL	DOC	NFI	CWT	EMA	RIB FAT	RUMP FAT	RBV%	IMF%
EBV	2.3	-	-4.8	4	49	89	115	105	19	-6.4	1.9	7	-0.28	65	2.8	-0.3	-2.3	0.2	4.7
Acc	-	-	-	-	-	-	-	-	-	-	-	-	-	-	-	-	-	-	-
Perc	-	-	-	-	-	-	-	-	-	-	-	-	-	-	-	-	-	-	-

\$ Purchaser: _____

66**TWYNAM T0195 #**Vendor: **TWYNAM**

ID	NXT22T0195
BIRTH DATE	10/04/2022
WEIGHT	558kg

Later maturing, nice length and plenty of volume.
24th out of 107 in NFI.



WRIGLEY N33 JVCN33 ^{SV}
Sire: WRIGLEY Q81 JVCQ81 ^{PV}
 WRIGLEY N34 JVCN34 ^{SV}
 RENNYLEA L467 NORL467 ^{PV}
Dam: RENNYLEA P917 NORP917 #
 RENNYLEA L708 NORL708 ^{SV}

ANGUS BREEDING INDEX	+\$246	-
HEAVY GRAIN INDEX	+\$324	-

	BIRTH				GROWTH					FERTILITY		CARCASE							
	CE-D	CE-DTR	GL	BTH WT	200 WT	400 WT	600 WT	MCW	MILK	DTC	SCROTAL	DOC	NFI	CWT	EMA	RIB FAT	RUMP FAT	RBY%	IMF%
EBV	6	4.6	-5	3.8	48	87	116	91	25	-6.5	1.7	18	0.13	69	8.7	-1.3	-1.4	0.7	4.4
Acc	-	-	-	-	-	-	-	-	-	-	-	-	-	-	-	-	-	-	-
Perc	-	-	-	-	-	-	-	-	-	-	-	-	-	-	-	-	-	-	-

\$ Purchaser:

67**TWYNAM T0205 E**Vendor: **TWYNAM**

ID	NXT22T0205
BIRTH DATE	14/04/2022
WEIGHT	582kg

One of the youngest in the draft, great length and plenty of volume.



BANQUET DUNCAN D412 VOND412 ^{SV}
Sire: BANQUET GARRETT G272 VONG272 ^{SV}
 BANQUET WIVEM C368 VONC368 #
 RENNYLEA KODAK K522 NORK522 ^{SV}
Dam: KELLY ANGUS KODAK P89 GXNP89 ^{SV}
 LAWSONS TANK E572 VLYE572 #

ANGUS BREEDING INDEX	+\$154	-
HEAVY GRAIN INDEX	+\$207	-

	BIRTH				GROWTH					FERTILITY		CARCASE							
	CE-D	CE-DTR	GL	BTH WT	200 WT	400 WT	600 WT	MCW	MILK	DTC	SCROTAL	DOC	NFI	CWT	EMA	RIB FAT	RUMP FAT	RBY%	IMF%
EBV	2.5	5.9	-2.7	4.2	47	88	122	126	14	-2.7	3.4	18	-0.38	56	3.7	-1.5	-2.6	0.3	3.6
Acc	-	-	-	-	-	-	-	-	-	-	-	-	-	-	-	-	-	-	-
Perc	-	-	-	-	-	-	-	-	-	-	-	-	-	-	-	-	-	-	-

\$ Purchaser:

68**TWYNAM T0207 SV**Vendor: **TWYNAM**

ID	NXT22T0207
BIRTH DATE	17/04/2022
WEIGHT	564kg

Lovely soft young bull, moves well with a strong back end.



WRIGLEY N33 JVCN33 ^{SV}
Sire: WRIGLEY Q81 JVCQ81 ^{PV}
 WRIGLEY N34 JVCN34 ^{SV}
 MERRIGRANGE WYOMING K238+90 VSYK568 #
Dam: TWYNAM Q610B NXTQ610B #
 VSYK568 VSYK568 #

ANGUS BREEDING INDEX	+\$185	66
HEAVY GRAIN INDEX	+\$246	63

	BIRTH				GROWTH					FERTILITY		CARCASE							
	CE-D	CE-DTR	GL	BTH WT	200 WT	400 WT	600 WT	MCW	MILK	DTC	SCROTAL	DOC	NFI	CWT	EMA	RIB FAT	RUMP FAT	RBY%	IMF%
EBV	-0.8	-0.2	-1.9	5.7	52	88	119	115	10	-4.5	0.5	-	-0.04	70	3.2	-2.7	-3	0.4	3.7
Acc	47%	35%	62%	65%	66%	63%	64%	62%	52%	27%	60%	-	43%	53%	51%	54%	54%	46%	57%
Perc	76	79	88	82	39	58	46	26	93	55	94	-	23	38	84	95	89	53	14

\$ Purchaser:

69

BARNETT TITAN T3^{PV}

Vendor: **BARNETT ANGUS**

ID	MBA22T3
BIRTH DATE	1/3/2022
WEIGHT	636kg

We should have called him 'Blue Moon' because that's how often a bull with a birth and growth spread like this come along! 1.4 birth weight and an incredible growth spread is not a surprise coming from the unique Powerball sire.



E W A PEYTON 642^{PV}
Sire: ROSEDA POWERBALL23 F091^{PV}
 ROSEDA BLACKCAP B103 D118 #
 BALDRIDGE BEAST MODE B074^{PV}
Dam: STONEY POINT PANDA R813^{PV}
 MURDEDUKE PANDA J339^{SV}

ANGUS BREEDING INDEX	+\$245	8
ANGUS BREEDING LOW FEED COST INDEX	+\$420	5

	BIRTH				GROWTH					FERTILITY			CARCASE						
	CE-D	CE-DTR	GL	BTH WT	200 WT	400 WT	600 WT	MCW	MILK	D to CAL	SCROTAL	DOCILITY	NFI-F	CWT	EMA	RIB FAT	RUMP FAT	RBY%	IMF%
EBV	8.3	5.2	-6.5	1.4	64	108	138	107	19	-5.3	2.7	21	0.52	73	5	1.5	-0.5	-1	3.9
Acc	54%	54%	68%	70%	71%	69%	69%	67%	62%	35%	66%	37%	50%	62%	61%	61%	61%	55%	65%
Perc	9	27	23	7	5	10	12	38	35	33	26	42	87	29	65	18	53	99	12

\$ Purchaser: _____

70

BARNETT TURBO T20^{PV}

Vendor: **BARNETT ANGUS**

ID	MBA22T20
BIRTH DATE	7/5/2022
WEIGHT	672kg

What an all-rounder: a long fronted foot fixer with a smooth shoulder, a beautiful balance out of a very reliable cow



RENNYLEA EDMUND E11^{PV}
Sire: RENNYLEA P559^{PV}
 RENNYLEA L507^{PV}
 AYRVALE MONTANA M13^{PV}
Dam: AYRVALE PRODIGIOUS P28^{PV}
 STRATHEWEN REGENT DREAM K18^{PV}

ANGUS BREEDING INDEX	+\$212	37
ANGUS BREEDING LOW FEED COST INDEX	+\$356	42

	BIRTH				GROWTH					FERTILITY			CARCASE						
	CE-D	CE-DTR	GL	BTH WT	200 WT	400 WT	600 WT	MCW	MILK	D to CAL	SCROTAL	DOCILITY	NFI-F	CWT	EMA	RIB FAT	RUMP FAT	RBY%	IMF%
EBV	-2.7	-2.2	-7.2	5.8	53	97	138	112	20	-5.6	3.2	16	0.30	79	9.3	1.2	-0.1	0.6	2.4
Acc	57%	57%	70%	70%	72%	69%	70%	68%	61%	40%	66%	44%	53%	61%	60%	62%	62%	55%	65%
Perc	85	89	15	84	37	30	13	29	22	25	14	67	66	16	18	22	46	40	41

\$ Purchaser: _____

71

BARNETT TORPEDO T27^{PV}

Vendor: **BARNETT ANGUS**

ID	MBA22T27
BIRTH DATE	16/5/2022
WEIGHT	568kg

A power cow family with three generations of donor cows, this Dual Threat son is a long as a train. Very growthy yearling with a great neck extension with curve bending growth



G A R SURE FIRE^{SV}
Sire: G A R DUAL THREAT^{PV}
 G A R DAYBREAK A3010 #
 G A R FAIL SAFE^{PV}
Dam: BARNETT FAIL SAFE Q10^{PV}
 BARNETT AUSSIE GIRL N12^{PV}

ANGUS BREEDING INDEX	+\$233	16
ANGUS BREEDING LOW FEED COST INDEX	+\$381	23

	BIRTH				GROWTH					FERTILITY			CARCASE						
	CE-D	CE-DTR	GL	BTH WT	200 WT	400 WT	600 WT	MCW	MILK	D to CAL	SCROTAL	DOCILITY	NFI-F	CWT	EMA	RIB FAT	RUMP FAT	RBY%	IMF%
EBV	-4.5	-4.1	-3.3	6.2	62	118	145	114	24	-5.5	3.5	23	-0.15	96	8.2	-1.7	-2.8	1.1	1.7
Acc	58%	58%	74%	73%	74%	71%	71%	69%	63%	37%	67%	53%	53%	63%	63%	63%	63%	57%	67%
Perc	91	95	73	89	7	3	7	27	7	28	9	36	13	2	27	84	88	14	61

\$ Purchaser: _____

72

BARNETT T46 PV

Vendor: **BARNETT ANGUS**

ID	MBA22T46
BIRTH DATE	4/6/2022
WEIGHT	600kg

The youngest bull in the draft who oozes growth and volume just like his dam. A free easy moving very long sided bull that will continue to grow



RENNYLEA EDMUND E11 PV
Sire: RENNYLEA P559 PV
 RENNYLEA L507 PV
 G A R PROPHET PV
Dam: BARNETT NEFERTITI N8 PV
 STRATHEWEN REGENT WILPENNA J53 PV

ANGUS BREEDING INDEX	+\$263	3
ANGUS BREEDING LOW FEED COST INDEX	+\$424	4

	BIRTH				GROWTH					FERTILITY			CARCASE						
	CE-D	CE-DTR	GL	BTH WT	200 WT	400 WT	600 WT	MCW	MILK	D to CAL	SCROTAL	DOCILITY	NFI-F	CWT	EMA	RIB FAT	RUMP FAT	RBY%	IMF%
EBV	-0.4	3.1	-3.7	5.7	62	111	147	112	23	-5.7	3.6	23	0.70	82	9.9	-1.1	-2.9	0.6	4.2
Acc	58%	58%	71%	71%	72%	70%	71%	69%	62%	44%	67%	47%	55%	62%	61%	63%	63%	57%	66%
Perc	74	49	67	82	8	7	6	30	10	23	8	35	95	11	14	73	89	40	8

\$ Purchaser: _____

73

TWYNAM T0006

Vendor: **TWYNAM**

ID	NXT22T0006
BIRTH DATE	15/02/2022
WEIGHT	670kg

Amazing depth and volume, heavy muscled high yielding bull.



Sire: GLENOCH HINMAN H221 QBGH221 SV
 RENNYLEA M1223 NORM1223 PV
Dam: TWYNAM Q18 NXTQ18 PV
 0 NXTM057 PV

ANGUS BREEDING INDEX	+\$-	-
HEAVY GRAIN INDEX	+\$-	-

	BIRTH				GROWTH					FERTILITY			CARCASE						
	CE-D	CE-DTR	GL	BTH WT	200 WT	400 WT	600 WT	MCW	MILK	DTC	SCROTAL	DOC	NFI	CWT	EMA	RIB FAT	RUMP FAT	RBY%	IMF%
EBV	-	-	-	-	-	-	-	-	-	-	-	-	-	-	-	-	-	-	-
Acc	-	-	-	-	-	-	-	-	-	-	-	-	-	-	-	-	-	-	-
Perc	-	-	-	-	-	-	-	-	-	-	-	-	-	-	-	-	-	-	-

\$ Purchaser: _____

74

TWYNAM T0008

Vendor: **TWYNAM**

ID	NXT22T0008
BIRTH DATE	18/02/2022
WEIGHT	662kg

Beautiful depth of body and volume, well proportioned and nicely muscled bull, Hooks Beacon 56B's son ensures plenty of carcass to this bull.



HOOKS SHEAR FORCE 38K #
Sire: HOOKS BEACON 56B SIMUSAM2854180 #
 HOOKS ZAFIRAH 41Z #
 CLUNES CROSSING DUSTY M13 QMUM13 PV
Dam: AYRVALE QUEST Q10 HIOQ10 PV
 STRATHEWEN REGENT MITTAGONG J23 VSNJ23 PV

ANGUS BREEDING INDEX	+\$-	-
HEAVY GRAIN INDEX	+\$-	-

	BIRTH				GROWTH					FERTILITY			CARCASE						
	CE-D	CE-DTR	GL	BTH WT	200 WT	400 WT	600 WT	MCW	MILK	DTC	SCROTAL	DOC	NFI	CWT	EMA	RIB FAT	RUMP FAT	RBY%	IMF%
EBV	-	-	-	-	-	-	-	-	-	-	-	-	-	-	-	-	-	-	-
Acc	-	-	-	-	-	-	-	-	-	-	-	-	-	-	-	-	-	-	-
Perc	-	-	-	-	-	-	-	-	-	-	-	-	-	-	-	-	-	-	-

\$ Purchaser: _____

75

TWYNAM T0020

Vendor: 

ID	NXT22T0020
BIRTH DATE	25/02/2022
WEIGHT	680kg

Nice long, later maturing bull, his breed composition gives him advantage in all areas.



NEW VISION OF SALACOA 209Y2 #
Sire: HOLLYWOOD OF SALACOA 23A53 IMU13R23A53 #
MS SVF PATTON 23Y66 #

Dam: TWYNAM F1 B137 NXTF1B137 #

ANGUS BREEDING INDEX	+\$-	-
HEAVY GRAIN INDEX	+\$-	-

	BIRTH				GROWTH					FERTILITY		CARCASE								
	CE-D	CE-DTR	GL	BTH WT	200 WT	400 WT	600 WT	MCW	MILK	DTC	SCROTAL	DOC	NFI	CWT	EMA	RIB FAT	RUMP FAT	RBY%	IMF%	
EBV	-	-	-	-	-	-	-	-	-	-	-	-	-	-	-	-	-	-	-	-
Acc	-	-	-	-	-	-	-	-	-	-	-	-	-	-	-	-	-	-	-	-
Perc	-	-	-	-	-	-	-	-	-	-	-	-	-	-	-	-	-	-	-	-

\$ Purchaser:

76

TWYNAM T0056

Vendor: 

ID	NXT22T0056
BIRTH DATE	9/03/2022
WEIGHT	686kg

Beautiful depth of body, well balanced composite bull.
8th in ADG, 12th in FCR and 32 in NFI.



RED DOC DIABLO 6306 #
Sire: RED DOC ET LUMBRE 8509 SGUSA20188237 #
RED DOC ET 6332 #
TWYNAM K051 NXTK051 ^{SV}
Dam: TWYNAM N203 NXTN203 ^{SV}
TWYNAM H173 NXXH173 #

ANGUS BREEDING INDEX	+\$-	-
HEAVY GRAIN INDEX	+\$-	-

	BIRTH				GROWTH					FERTILITY		CARCASE								
	CE-D	CE-DTR	GL	BTH WT	200 WT	400 WT	600 WT	MCW	MILK	DTC	SCROTAL	DOC	NFI	CWT	EMA	RIB FAT	RUMP FAT	RBY%	IMF%	
EBV	-	-	-	-	-	-	-	-	-	-	-	-	-	-	-	-	-	-	-	-
Acc	-	-	-	-	-	-	-	-	-	-	-	-	-	-	-	-	-	-	-	-
Perc	-	-	-	-	-	-	-	-	-	-	-	-	-	-	-	-	-	-	-	-

\$ Purchaser:

77

TWYNAM T0091

Vendor: 

ID	NXT22T0091
BIRTH DATE	15/03/2022
WEIGHT	642kg

Balanced Bull with good length of body.
33rd in FCR, 43rd in NFI, 20th in ADG out of 107.



R&R BEEFMAKER 7Z #
Sire: R&R BEEFMAKER 116D BEEFMAKER #
R&R MILKMAID 40W #
RENNYLEA L1164 NORL1164 ^{PV}
Dam: RENNYLEA P1342 NORP1342 ^{SV}
RENNYLEA J710 NORJ710 #

ANGUS BREEDING INDEX	+\$-	-
HEAVY GRAIN INDEX	+\$-	-

	BIRTH				GROWTH					FERTILITY		CARCASE								
	CE-D	CE-DTR	GL	BTH WT	200 WT	400 WT	600 WT	MCW	MILK	DTC	SCROTAL	DOC	NFI	CWT	EMA	RIB FAT	RUMP FAT	RBY%	IMF%	
EBV	-	-	-	-	-	-	-	-	-	-	-	-	-	-	-	-	-	-	-	-
Acc	-	-	-	-	-	-	-	-	-	-	-	-	-	-	-	-	-	-	-	-
Perc	-	-	-	-	-	-	-	-	-	-	-	-	-	-	-	-	-	-	-	-

\$ Purchaser:

78

TWYNAM T0093

Vendor: 

ID	NXT22T0093
BIRTH DATE	15/03/2022
WEIGHT	638kg

Another nicely muscled bull, consistent depth of body.



R&R BEEFMAKER 7Z #
Sire: R&R BEEFMAKER 116D BEEFMAKER #
 R&R MILKMAID 40W #
 BROWN MTN AFRICA L113 ELZL113 SV
Dam: BROWN MTN ISOBYX P249 ELZP249 #
 BROWN MTN ISOBYX F48 ELZF48 #

ANGUS BREEDING INDEX	+\$-	-
HEAVY GRAIN INDEX	+\$-	-

	BIRTH				GROWTH					FERTILITY		CARCASE								
	CE-D	CE-DTR	GL	BTH WT	200 WT	400 WT	600 WT	MCW	MILK	DTC	SCROTAL	DOC	NFI	CWT	EMA	RIB FAT	RUMP FAT	RBY%	IMF%	
EBV	-	-	-	-	-	-	-	-	-	-	-	-	-	-	-	-	-	-	-	-
Acc	-	-	-	-	-	-	-	-	-	-	-	-	-	-	-	-	-	-	-	-
Perc	-	-	-	-	-	-	-	-	-	-	-	-	-	-	-	-	-	-	-	-

\$ Purchaser: _____

79

TWYNAM T0153

Vendor: 

ID	NXT22T0153
BIRTH DATE	2/04/2022
WEIGHT	562kg

Beautiful young bull, nicely balanced with depth of body and volume.



Sire: TWYNAM P99 #

TE MANIA EMPEROR E343 VTME343 PV
Dam: TWYNAM K025 NXTK025 SV
 TWYNAM D6 NXTD6 SV

ANGUS BREEDING INDEX	+\$-	-
HEAVY GRAIN INDEX	+\$-	-

	BIRTH				GROWTH					FERTILITY		CARCASE								
	CE-D	CE-DTR	GL	BTH WT	200 WT	400 WT	600 WT	MCW	MILK	DTC	SCROTAL	DOC	NFI	CWT	EMA	RIB FAT	RUMP FAT	RBY%	IMF%	
EBV	-	-	-	-	-	-	-	-	-	-	-	-	-	-	-	-	-	-	-	-
Acc	-	-	-	-	-	-	-	-	-	-	-	-	-	-	-	-	-	-	-	-
Perc	-	-	-	-	-	-	-	-	-	-	-	-	-	-	-	-	-	-	-	-

\$ Purchaser: _____

80

TWYNAM T0158

Vendor: 

ID	NXT22T0158
BIRTH DATE	2/04/2022
WEIGHT	560kg

Very nice type, appealing, good length of body and well balanced. 26th out of 107 in FCR.



TE MANIA KIRBY K138 VTMK138 PV
Sire: TE MANIA PERFECTIONISM P1192 VTMP1192 SV
 TE MANIA BARUNAH G450 VTMG450 #

Dam: TWYNAM Q0609B NXTQ0609B #

ANGUS BREEDING INDEX	+\$-	-
HEAVY GRAIN INDEX	+\$-	-

	BIRTH				GROWTH					FERTILITY		CARCASE								
	CE-D	CE-DTR	GL	BTH WT	200 WT	400 WT	600 WT	MCW	MILK	DTC	SCROTAL	DOC	NFI	CWT	EMA	RIB FAT	RUMP FAT	RBY%	IMF%	
EBV	-	-	-	-	-	-	-	-	-	-	-	-	-	-	-	-	-	-	-	-
Acc	-	-	-	-	-	-	-	-	-	-	-	-	-	-	-	-	-	-	-	-
Perc	-	-	-	-	-	-	-	-	-	-	-	-	-	-	-	-	-	-	-	-

\$ Purchaser: _____



LIVESTOCK AUCTION TERMS AND CONDITIONS OF SALE

CHAPTER ONE - PRELIMINARY

- (a) A vendor is bound by these terms and conditions by offering livestock for sale by auction.
- (b) An agent (which includes an auctioneer) is bound by these terms and conditions by conducting an auction sale.
- (c) A buyer is bound by these terms and conditions by bidding at auction.
- (d) Competition and Consumer Act (Cth) 2010

It is unlawful for parties that are, or otherwise would be, in competition with each other to make, or give effect to, a contract, arrangement or understanding that contains a provision relating to:

- price-fixing; or
- restricting outputs in the production and supply chain; or
- allocating customers, suppliers or territories; or
- bid-rigging; or
- collusive bidding.

Large fines and other sanctions may be imposed for unlawful conduct.

- (a) In these terms the expression auctioneer, agent, buyer and vendor respectively includes the servants, contractors and agents of each of them. The auctioneer, agent, buyer and vendor shall be wholly responsible for the acts and omissions of their respective servants, contractors and agents. The term "auctioneer" includes, so far as the law and context permits, the vendor's agent.

(b) When used in these terms the expressions "companion animals" means all animals originating from the same property on a particular day. Where lots are split across establishments, then all of these animals shall be regarded as companions.

- The following applies in interpreting these terms and conditions:

(a) The following words have the following meanings:

Fees means all levies, charges, fees, costs and other expenses incurred or relating to these terms and conditions and the sale and purchase of livestock including, without limitation, transaction levies, yard and weigh dues, cartage, advertising and rebates, and whether paid for, or incurred, by the agent;

Livestock means animals auctioned pursuant to these terms and conditions; and

Price means the amount at which the lot has been sold to the buyer referred to in clause 7 of these terms and conditions

(i) plus any Fees and other expenses incurred in relation to the purchase of livestock that are payable by the buyer; and

(ii) plus any GST added in accordance with clause 12;

(b) These terms and conditions are subject to legislation or regulation in the State in which the auction is conducted and in the event of any conflict then the legislation or regulation will prevail. The provisions of these terms and conditions are in addition to, and do not derogate from, the duties and rights of vendors, agents and buyers set out in legislation and regulation in the State in which the auction is conducted.

CHAPTER TWO - STANDARD TERMS OF SALE

- Subject to any reserve price, and to the right, prior to the fall of the hammer, of the vendor to withdraw any lot without declaring the reserve, the highest bidder shall be the buyer.

- The auctioneer has the right to bid on behalf of the vendor provided that right is notified prior to the commencement of the sale and is subject to State law.

- A bid cannot be made or accepted after the fall of the hammer unless, in accordance with clause 8, the auctioneer decides to put the lot up again.

- Prior to the fall of the hammer the auctioneer shall announce the last bid and receive any further bids. The last price called by the auctioneer at the fall of the hammer shall be the amount at which the lot has been sold.

- In the event of a disputed bid, the auctioneer is the sole arbitrator of the successful bidder or the auctioneer may decide to put the lot up again. The auctioneer's decision is final.

- The auctioneer may refuse to accept any bid which, in the auctioneer's opinion, is not in the best interest of the vendor and need not give reasons for doing so.

- A bidder shall be deemed to be a principal unless, prior to bidding, the bidder has given to the auctioneer a copy of written authority to bid for or on behalf of another person.

- The successful bidder at a livestock auction sale must give to the auctioneer at the fall of the hammer:

- the purchaser's name; or
- the bid card number which identifies the purchaser; or
- the name of the person on whose behalf the successful bid was made; and
- the Property Identification Code (known as the "PIC") of destination.

- The auction shall be conducted on the basis that the bid price shall be exclusive of Goods and Services Tax (GST). GST shall be added after the fall of the hammer for those sales subject to GST.

- The vendor warrants;

- That the vendor has (or will have) the right to sell the livestock at the time of delivery; and
- That the purchaser will obtain title on completion of the purchaser's obligations under this contract including payment.

- If a buyer does not comply with any of these terms and conditions, which includes the requirement to buy, any livestock known down to that buyer may be re-sold by public auction or private contract in whatever lots and manner the auctioneer decides. The re-sale may be with or without notice and shall be at the buyer's risk. The buyer is responsible for all loss and expense arising out of a re-sale and is not entitled to any resulting profit.

- The buyer of livestock must pay the agent the full amount of the purchase price in immediate funds on receipt of a tax invoice. Payment is required prior to delivery unless some other time for payment is specified in an agreement between the buyer and the auctioneer that was made before the fall of the hammer. If, before delivery, payment has not been made then clauses 20 to 23 apply.

- No person may bid unless, prior to the commencement of the sale, that person has made arrangements satisfactory to the auctioneer for payment for livestock purchased. If bids in breach of this condition are inadvertently accepted, delivery shall not be given until the purchase money is paid and any law, rule or practice to the contrary is accordingly negated as far as possible.

- (a) Cattle sold on a liveweight basis that are weighed pre-sale are at the risk and expense of the buyer upon the fall of the hammer.

- Cattle sold on a liveweight basis that are weighed post-sale are at the risk and expense of the buyer immediately after weighing.

- All livestock other than cattle sold on a liveweight basis are at the risk and expense of the buyer upon the fall of the hammer.

- (a) Subject to this clause the sale is complete on the fall of the hammer.

- The time for rejection is the time commencing at the fall of the hammer and ending at the first of:

- delivery is taken by a representative of the buyer;
- departure of the animal from the purchaser's delivery pen; or
- one hour after the last animal is:
 - in the case of pre-sale weighing, sold; or
 - in the case of post-sale weighing, weighed.

- During the time for rejection the buyer may reject any animal which is lame, blind or diseased where that condition existed prior to the fall of the hammer but could not be reasonably observed when the animal was in the selling pen.

- If the purchaser rejects an animal during the time for rejection then the sale of that animal is cancelled and the animal is returned to the vendor or sold on such terms as any buyer and the agent may agree, after the agent has disclosed the reasons for rejection to that buyer.

- This subclause applies only to cattle which are sold in Queensland at auction for slaughter. The agent has responsibility for the prevention of loss or escape (but not death, sickness or injury) of those cattle from the time of the fall of the hammer, for delivery to and from the scales, to the buyer's delivery pen and onto the buyer's nominated transport. This responsibility ends at the earlier of those cattle boarding the buyer's nominated transport or sunset on the day after the sale. This

subclause does not apply if the agent makes an announcement to that effect prior to sale.

- (a) Subject to the right of rejection in Clause 18, all conditions and warranties expressed or implied by law are hereby excluded from the sale to the extent that the law allows. All lots are open for inspection prior to the commencement of the sale and are sold with all faults, if any. No compensation shall be given for any faults, imperfections, errors of description, number in or of any lots sold or otherwise.

- Any claim or objection arising out of an error or misdescription in the provision of relevant information in terms of legislation or regulation concerning the National Livestock Identification Scheme (NLIS) must be made by 5:00pm on the seventh day after the fall of the hammer. No objection, requisition or claim against the vendor or agent in respect of such error or misdescription can be made after that time.

- Any statements made by the vendor or the auctioneer whether in writing or orally to the effect that any female has been pregnancy tested or scanned positive shall mean and require only that a certificate in writing shall be supplied to the buyer signed by a qualified veterinary surgeon or certified scanner certifying that the said female has been tested or scanned on the date specified in the certificate and that in the opinion of the surgeon or scanner was pregnant on that date.

- For slaughter cattle, the agent undertakes to make every reasonable effort to ensure that any NLIS cattle device number is transferred from the saleyard PIC to the purchaser's PIC on the NLIS database no later than midnight on the day of the sale.

- For other slaughter livestock the agent undertakes to make every reasonable effort to ensure that the NLIS information is transferred from the saleyard PIC to the purchaser's PIC on the NLIS database no later than midnight on the day of the sale.

- Where livestock have a food safety or market eligibility status derived from the National Vendor Declaration (NVD) and/or the NLIS/ERP database, the agent will inform the buyers by pre-sale catalogue and/or announce the status prior to the offering of those lots.

- If delivery is made to, or possession obtained by, the buyer or its representative before full payment of the Price, then until full payment is received, the buyer:

- does not acquire title to the livestock;
- holds the livestock as bailee only for the vendor;
- must act in a fiduciary capacity in its relationship with the vendor;
- must store the stock separately or so that they are readily distinguishable from other livestock owned by the buyer;
- is responsible for the safety and well being of the livestock;
- may make a bona fide sale for market value of any or all of the livestock. As between the buyer and the subsequent buyer, the sale shall be made by the buyer in its own name and not as agent for the vendor, however as between the vendor and buyer, the sale shall be made as bailee and agent for the vendor; and
- must keep and account for the proceeds of any subsequent sale separately from its other money and hold those proceeds, together with the benefits of any rights against subsequent buyers, on trust for the vendor.

- The purchaser agrees that:

- Clause 20 creates a registrable security interest under the Personal Property Securities Act (Cth) 2009 (PPSA);
- The Purchaser acknowledges the rights of the Seller (and/or the Agent if Clause 25 applies) to register a financing statement under the PPSA with respect to the security interest created by this clause;
- The Livestock are collateral for the purposes of the PPSA;
- to the extent permitted, the Purchaser waives any right the Purchaser has under the PPSA to receive notices; and
- the date upon which the security interest created by this clause comes into force is the first date on which livestock are delivered pursuant to this contract.

- The buyer may not make any claim against the vendor for actions by the vendor or its agent under clauses 20 to 21 and indemnifies the vendor and its agent against any loss, damage, costs, expenses, penalties, fines or claims suffered by the vendor, the agent or any person or entity arising from the vendor exercising its rights under clauses 20 or 21.

- Clause 23 applies whenever the agent pays the vendor before being paid by the buyer, which the agent is not bound to do. The agent is then the del credere agent of the vendor at law.

- The vendor hereby gives notice to the buyer of the assignments referred to in clause 23.3.

- When this clause applies, in addition to any rights of the agent that arise by operation of the law, the parties agree that, subject to clause 23.5 the agent is subrogated to all rights of the vendor under these terms and conditions against the buyer.

- The vendor acknowledges that the agent may take enforcement, repossession or other action to recover any livestock for which the buyer has not paid in full, or the Price of such livestock, owing by the buyer under these terms and conditions:

- when this clause does not apply, as agent of the vendor (including by reselling the livestock); and
- when this clause applies, on the agent's own behalf exercising the rights of the vendor by subrogation or assignment under these terms and conditions (whether in the vendor's name or not) and where title to the livestock has not passed to the agent, by selling the livestock as agent of the vendor without the agent having to account to the vendor for the proceeds of sale.

- The agent may at any time, assign, transfer, securitise or otherwise dispose of all or any of its rights under these terms and conditions and any debts created pursuant to it (including, without limitation, the rights assigned to it under clause 23.3).

- The vendor hereby irrevocably appoints the agent as the vendor's attorney to:

- do at any time and in any manner as the agent thinks fit all acts necessary or desirable to perfect or improve the rights and interests afforded, or intended to be afforded, to the agent under these terms and conditions; and
- appoint one or more sub-attorneys to do anything that the agent may do as the vendor's attorney.

- These terms and conditions do not render the agent liable to the buyer as vendor nor entitle the buyer to set off against the agent any right the buyer may have against the vendor or otherwise.

- The buyer acknowledges that the provisions of this clause 23 are intended solely for the benefit of the agent (and its assigns) and the vendor. The liabilities and obligations of the buyer will not be in any way affected:

- by this clause 23, other than as it expressly provides; or
- by the failure of the agent or the vendor or either of them to comply with the terms of this clause 23.

- The buyer must pay all amounts payable to the vendor or the agent under these terms and conditions without any deduction, withholding, set off or counterclaim whatsoever, whether the benefit of a deduction, withholding, set off or counterclaim is alleged to exist in favour of the buyer or against the vendor or the agent in any capacity whatsoever or any other person including any assignor of the vendor's or the buyer's interests under these terms and conditions.

- (a) The agent agrees that he is liable to pay to the vendor the Price, less such commission as is agreed between the vendor and the agent, and in the absence of any agreement such amount as is reasonable, and less the Fees that are payable by the vendor that were incurred by the agent on behalf of the vendor in relation to the sale of the livestock.

- In the event that the buyer pays the Price or part of it direct to the vendor then the agent has no liability to the vendor for the amount of such payment. Further, if the agent pays the vendor any amount which the buyer also pays direct to the vendor in respect of the same livestock, then the vendor must repay the agent that amount and the agent must repay to the vendor that amount to an account held in the name of the vendor by the agent.

- Regardless of whether or not a sale has occurred the agent may, but is not under obligation so to do, instead of deducting payments owed to it by the vendor, debit the amount of the commission and fees to an account held in the name of the vendor by the agent.

- (a) The auctioneer has been retained by the vendor as auctioneer for the purpose of selling the livestock comprised in the lots. The terms of

engagement between the auctioneer and the vendor do not extend to the provision of advice by the auctioneer to the vendor in relation to the safety or otherwise of the sale ring, the saleyards and the surrounding environments.

- The vendor, the agent and the buyer agree to comply with their several duties under the Australian Animal Welfare Standards and Guidelines for the Land Transport of Livestock and further to consign, manage, receive, transport and handle livestock in accordance with any other or additional requirements of animal welfare legislation specific to the jurisdiction in which livestock are consigned, managed, received, transported and handled in the course of the auction process.

CHAPTER THREE - VENDOR WARRANTY FOR CORRECT PRESENTATION AND DECLARATION

26. This chapter applies only in the case of livestock and their companion animals sold at auction for slaughter when the buyer is the slaughterer and the livestock are transported direct from the sale yard to the meatworks at which they are slaughtered. This chapter does not apply if the buyer is a trader who subsequently resells the livestock to a slaughterer. A slaughterer is any person who pays the AMPF Processor levy.

- The warranty of a vendor is that livestock and their companion animals offered for sale at auction:

- pass government and other regulatory authority requirements and inspections at the time of slaughter;
- are of merchantable quality;
- carry an NLIS device in accordance with State law;
- in the case where a representation has been made in the pre-sale catalogue that the livestock have particular characteristics or are fit for a particular purpose or market and such representations are based on information in any document, the livestock will have those characteristics or will be fit for the particular purpose or market; and
- all information in any document provided by the vendor is true, complete and correct in all material respects.

- In the event of a breach by the vendor of the vendor's warranty and provided such breach is notified by the buyer to the agent by 5:00pm on the 7th day after the fall of the hammer then the buyer is not liable to pay the portion of the Price of such of the vendor's livestock to which the breach applies.

- However if the breach by the vendor is such that the livestock are not rejected outright but are instead downgraded then the buyer will pay the value of the livestock at their next highest and best use.

- In the case of a breach by the vendor of the vendor's warranty then the vendor will also be liable to the buyer for any further losses which the buyer might establish but the buyer will take all reasonable steps in co-operation with the agent and vendor to mitigate both the effect of the breach and the amount of any loss.

- Where a sentient animal of a lot tests positive for chemical residue, or foreign material contamination and provided such test is certified and notified as required by these vendor warranty terms, then:

- the buyer will be entitled to delay payment for the price of all livestock in that lot only; or
- the vendor has the option, at the vendor's cost, of collecting the companion animals, if allowed by law; or of having the livestock slaughtered in which event the risk of further condemnations will be that of the vendor. Where product integrity is potentially jeopardised, the Processor has the right to refuse slaughter and send the livestock back to the consigning property at the vendor's cost.

- The auctioneer is liable to the buyer in respect of any breach of the vendor's warranty arising out of:

- any error, by the auctioneer, of transcription of information from the NVD completed by the vendor to the pre-sale catalogue or the buyers post-sale summary;
- any failure by the auctioneer to notify the buyer, prior to bidding, of any breach by the vendor of the warranty of the vendor if the buyer establishes that the agent knew of such breach prior to the sale; and
- any failure by the auctioneer to announce prior to bidding, or disclose in the pre-sale catalogue, that the vendor has failed to provide a NVD that is complete in all material respects.

CHAPTER FOUR - OWNERS RISK FOR CONDITION OF CATTLE

33. This chapter applies only in the case of cattle and their companion animals sold at auction for slaughter when the buyer is the slaughterer and the cattle are transported direct from the sale yard to the meatworks at which they are slaughtered. This chapter does not apply if the buyer is a trader who subsequently resells cattle to a slaughterer. A slaughterer is any person who pays the AMPF Processor levy.

- Owners risk reflects the producer's responsibility to provide slaughter cattle for sale that are fit for human consumption. Cattle are fit for human consumption if they are not condemned as unfit by government. Owners risk applies if the condemnation is due to a condition in the animal which the buyer establishes, by the relevant government certificate, existed prior to the fall of the hammer.

- A buyer with the benefit of owners risk protection is not liable to pay the Price of that animal to the vendor. The buyer remains nevertheless liable for all costs incurred after the fall of the hammer in transport, slaughter, testing and disposal of the animal.

- Owners risk protection is available to the buyer of cattle to which this chapter applies if all of the following are satisfied:

- a certificate is issued by government which states the relevant NLIS RFID tag number and PIC, the date of the certificate, the reason for condemnation and that the reason for condemnation existed prior to the fall of the hammer;
- the certificate is received by the selling agent either in its original form or by fax or electronic communication in the form of data, text or imaging by 5:00pm on the 7th day after the fall of the hammer; and
- if the condemnation is due to chemical residue the certificate follows testing in a government approved laboratory which establishes maximum residue limits in excess of the Australian limit.

- Owners risk does not apply, and the buyer must pay for the cattle, if the reason for condemnation is any of bruising, fever, partial condemnation or emaciation.

CHAPTER FIVE - NOTICES REQUIRED BY LEGISLATION

NSW Property, Stock and Business Agents Act 2002 Warnings

Penalties for collusive practices. It is an offence against the Property, Stock and Business Agents Act 2002 for a person to do any of the following as a result of a collusive practice, or to induce or attempt to induce another person by a collusive practice to do any of the following:

- to abstain from bidding; or
- to bid to a limited extent only; or
- to do any other act that might prevent free and open competition.

Severe penalties may be imposed on persons convicted of collusive practices.

The auctioneer has the right to make one bid on behalf of the vendor if the auctioneer clearly and precisely announces that fact prior to the sale.

Tasmania Legislation. An auctioneer conducting a public auction must not appear to acknowledge the making of a bid if no bid was made. A person must not participate in collusive practices by way of making or receiving an unlawful promise to abstain from bidding, not to bid except to a limited extent or do any other thing which may prevent free and open competition.

WA Auction Sales Act 1973 s31 NOTICE

It is an offence to:

- induce or attempt to induce another person to abstain from bidding by means of a promise, expressed or implied, that the other person will have the right to elect to take over as buyer or to toss or draw lots to establish who is to become the owner;
- abstain or agree to abstain from bidding as a result of such a promise;
- knowingly enter or permit or cause to be entered in the auctioneer's record any name other than that of the actual successful bidder;
- enter in the auctioneer's record the name of the buyer other than that of the actual successful bidder; or
- in the case of successful bidder supply wrong information as to the name of the buyer the auctioneer or to any person, firm or corporation on whose behalf the sale is conducted.

The vendor, or any person on behalf of the vendor, or the auctioneer have the right to make no more than three bids.



SALE SUMMARY

TWYNAM & BARNETT ANGUS SALE

Roma Saleyards, Qld

Thursday 07 September 2023


SOLD	OFFERED	GROSS SALE	AVERAGE	TOP



Thank you for your support

We look forward to seeing you in 2024

**Big Enough To Count,
Small Enough To Care..**

GDL  [®]

A NUTRIEN AG SOLUTIONS PARTNER

STUD SALES

Australia

LIVE AUCTIONS & ONLINE SALES

BULLS, FEMALES & GENETICS

PRIVATE SALES, COMMERCIAL SALES, FEEDLOT SALES

Mark Duthie
0448 016 950

Peter Brazier
0407 525 983

Josh Heck
0409 732 676

Georgie Connor
0428 347 550

Corey Evans
0427 233 999

Simon Kinbacher
0427 735 620

www.gdlrural.com.au



LOT 1 S88 TWYNAM ANGUS



LOT 5 S232 TWYNAM ANGUS



LOT 13 S325 TWYNAM ANGUS



LOT 24A S137 BARNETT ANGUS



LOT 46 S291 TWYNAM COMPOSITE



LOT 47 S304 TWYNAM COMPOSITE



LOT 57 T78 TWYNAM ANGUS



LOT 70 T20 BARNETT ANGUS